

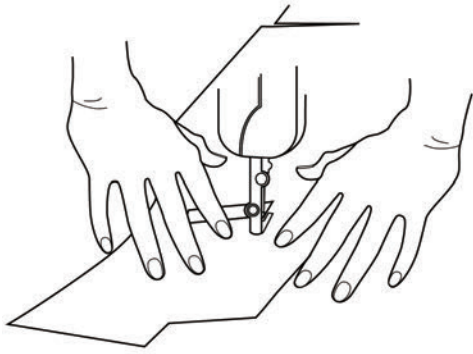
DesignOptions

Jacket



Design Options

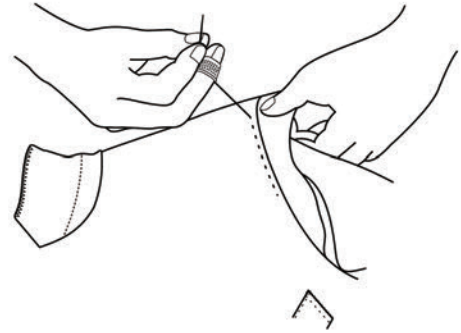
Make



Traditional

Handwork in 'Traditional' make:

- Button attachment
- Collar front bottom
- Bottom lining/facing
- Flower loop



Handmade

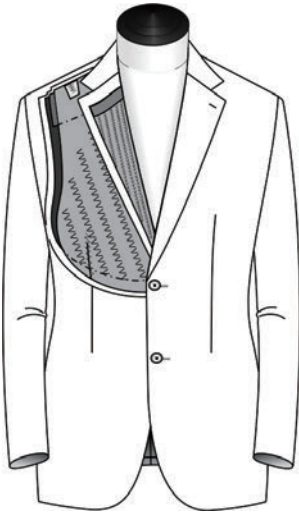
Handwork in 'Handmade' make:

- Button attachment
- Collar front bottom
- Bottom lining/facing
- Flower loop

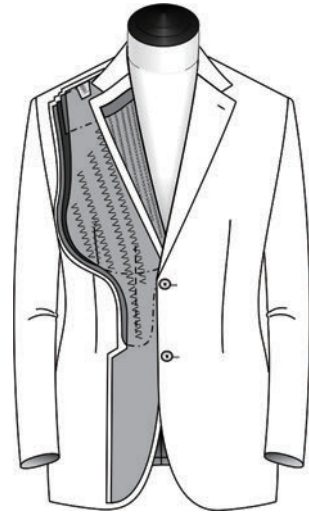
Extra:

- Pick Stitching
- Button holes
- Collar attachment
- Lining armhole completely
- Lining shoulderseam
- Chest pocket
- Labels
- Trousers inside waistband as a curtain

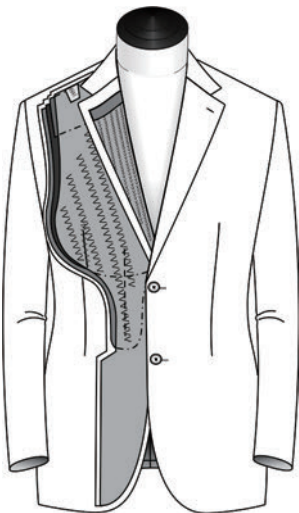
Make



Half Canvas



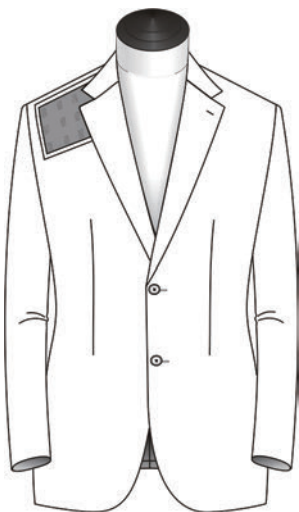
Handmade



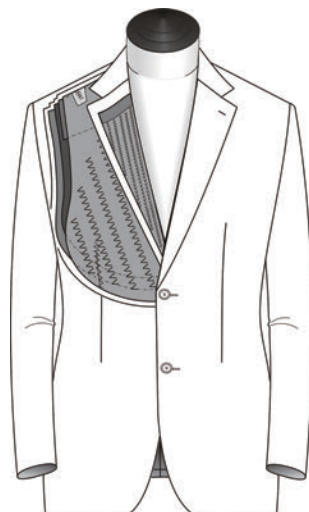
Full Canvas



Unconstructed Handmade

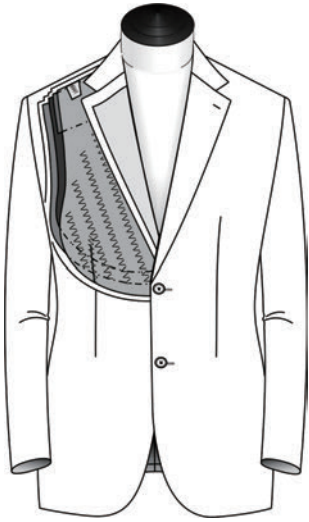


Unconstructed



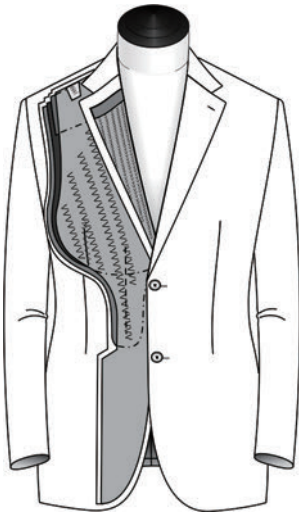
Half Canvas Handmade

Make

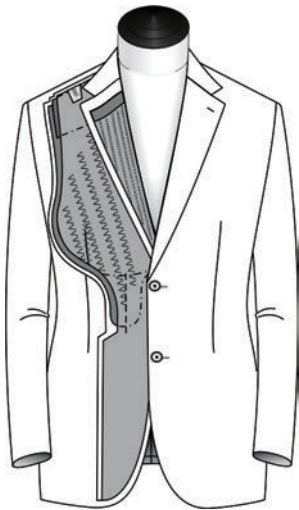
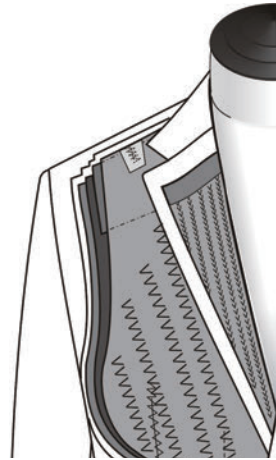


Semi-traditional

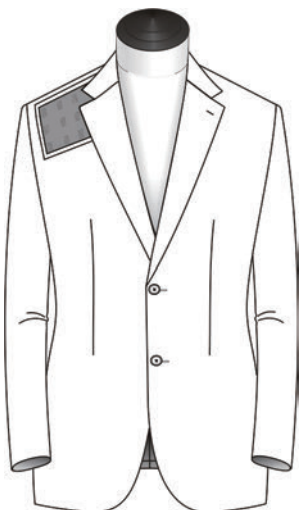
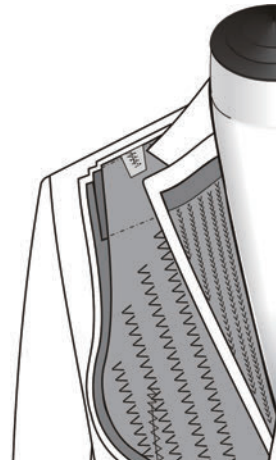
Canvas



Standard

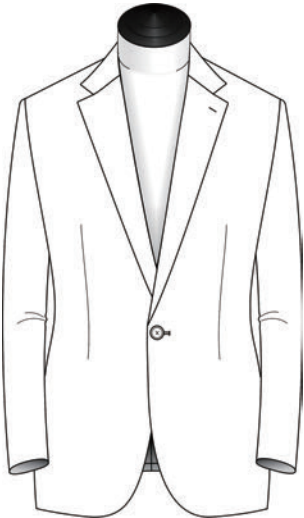


Light Canvas

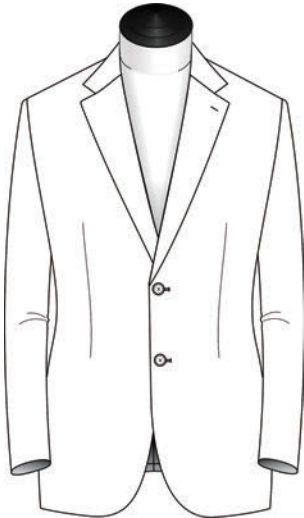


No
(Only Unconstructed Make)

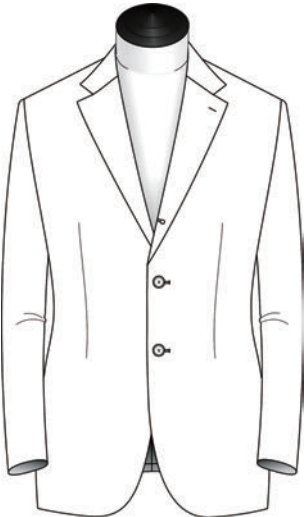
Closure



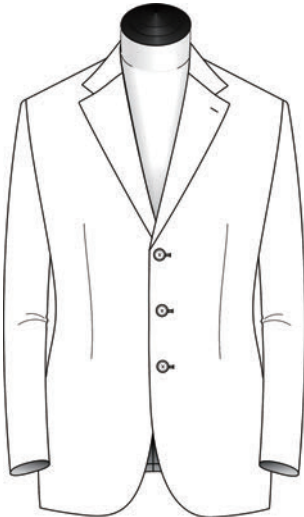
1 Button



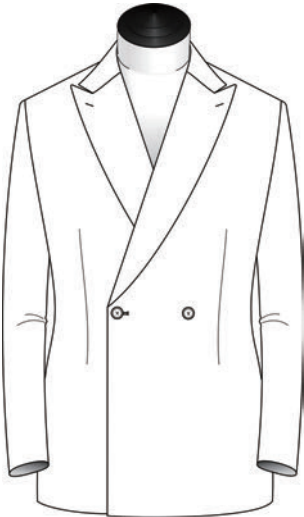
2 Button



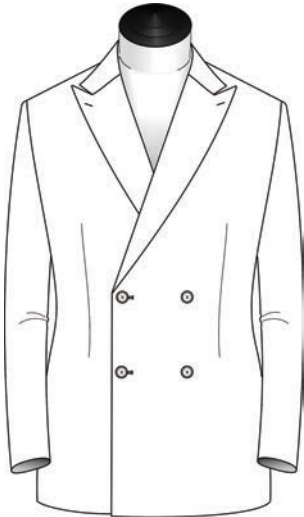
3 Button Roll-over



3 Button

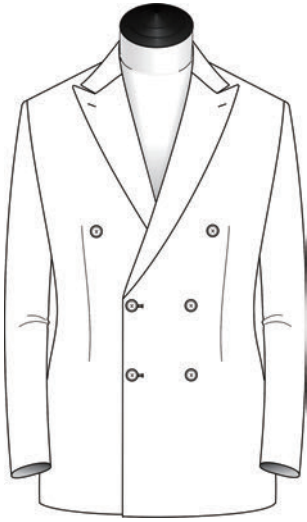


2 Button DB



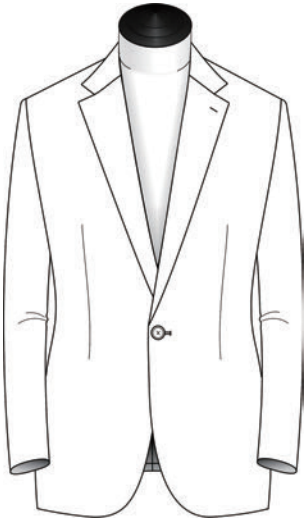
4 Button DB

Closure



6 Button DB

Closure Buttonhole

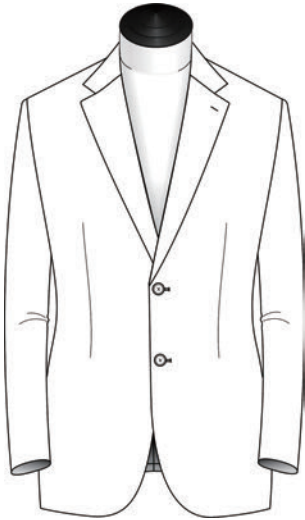


Left



Right

Lapel



Notch Lapel Standard

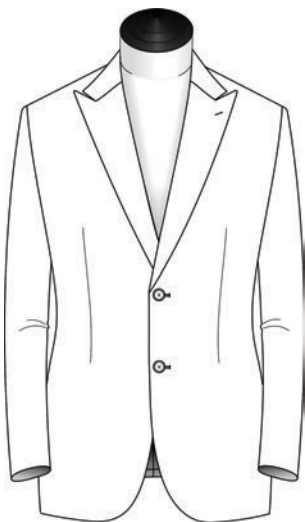


Closure

1B.2B.3B

Lapel Width

Notch Lapel 6 cm | 2 3/8"
Notch Lapel 7 cm | 2 3/4"
Notch Lapel 8 cm | 3 1/8"
Notch Lapel 9 cm | 3 1/2" (Standard)
Notch Lapel 10 cm | 4"
Notch Lapel 11 cm | 4 3/8"



Peak Lapel Standard

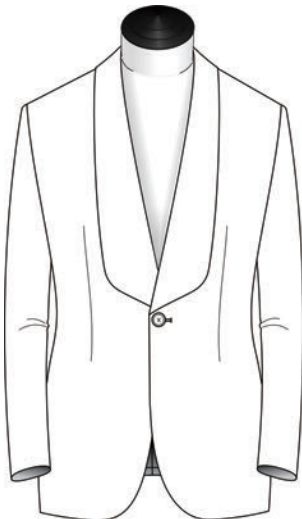


Closure

1B.2B.3B (Only 9 cm | 3 1/2")

Lapel Width

Peak Lapel 7 cm | 2 3/4"
Peak Lapel 8 cm | 3 1/8"
Peak Lapel 9 cm | 3 1/2" (Standard)
Peak Lapel 10 cm | 4"
Peak Lapel 11 cm | 4 3/8"

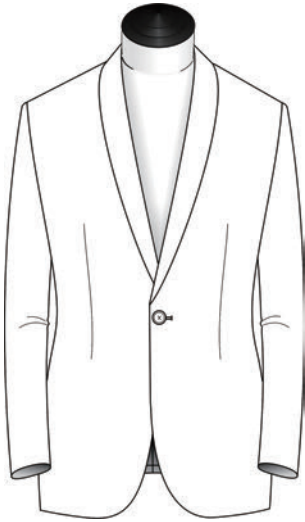


1 Button Bib Shawl

Closure

1B

Lapel



Shawl Collar Lapel

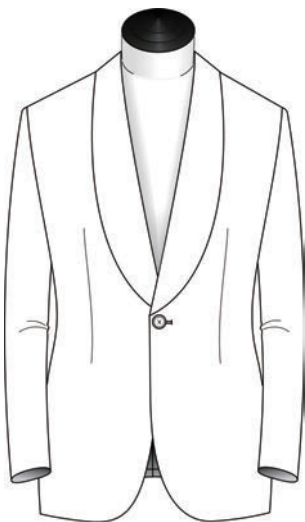


Closure

1B

Lapel Width

Shawl Collar 5 cm | 2" (Standard)



Shawl Collar Lapel

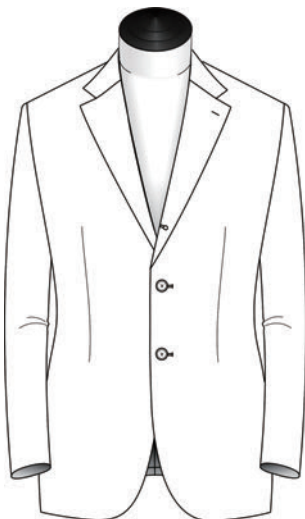


Closure

1B

Lapel Width

Shawl Collar 6 cm | 2 3/8"
Shawl Collar 7.6 cm | 3"



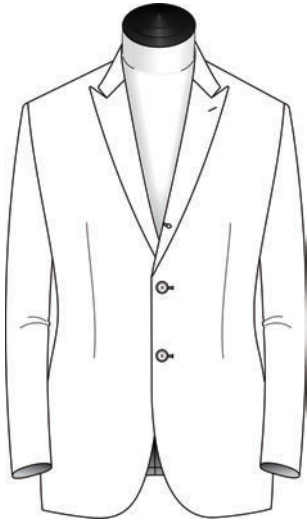
3 Button Roll-over



Lapel Width

Notch Lapel 6 cm | 2 3/8"
Notch Lapel 7 cm | 2 3/4"
Notch Lapel 8 cm | 3 1/8"
Notch Lapel 9 cm | 3 1/2" (Standard)
Notch Lapel 10 cm | 4"

Lapel

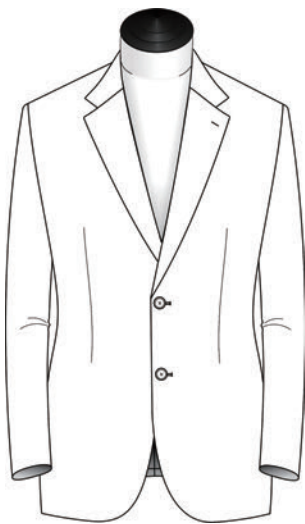


3 Button Roll-over



Lapel Width

Peak Lapel 7 cm | 2 3/4"
Peak Lapel 8 cm | 3 1/8"
Peak Lapel 9 cm | 3 1/2" (Standard)
Peak Lapel 10 cm | 4"



Notch w Low Gorge 8.2 cm | 3 1/4"

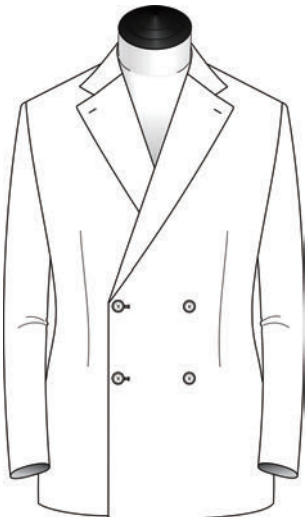


Closure

2B.3B Roll-over

Lapel Width

Notch w Low Gorge 8.2 cm | 3 1/4"



Notch Lapel DB



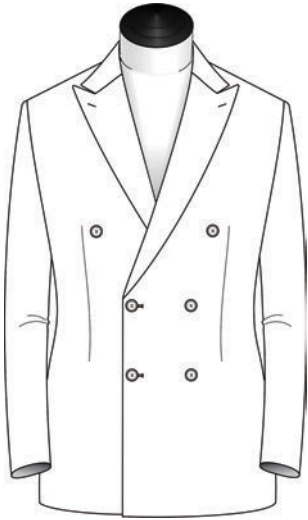
Closure

DB2.DB4.DB6

Lapel Width

Notch Lapel DB 8 CM | 3 1/8"
Notch Lapel DB 9 CM | 3 1/2" (standard)
Notch Lapel DB 10 CM | 4"
Notch Lapel DB 11 CM | 4 3/8"

Lapel



Peak Lapel DB

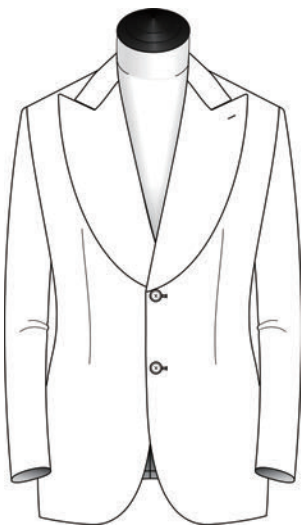


Closure

DB2.DB4.DB6

Lapel Width

Peak Lapel DB 8cm | 3 1/8"
Peak Lapel DB 9cm | 3 1/2"
Peak Lapel DB 10cm | 4"
Peak Lapel DB 11cm | 4 3/8"



Curved Wide Peak

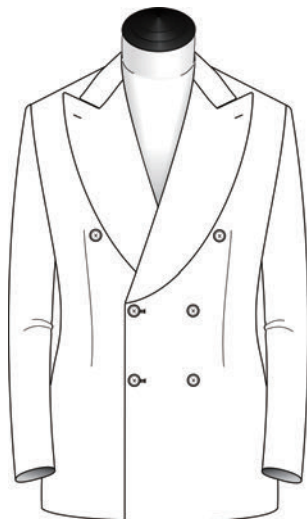


Closure

1B.2B

Lapel Width

Curved Wide Peak 11.5 cm | 4 1/2"



DB Curved Wide Peak



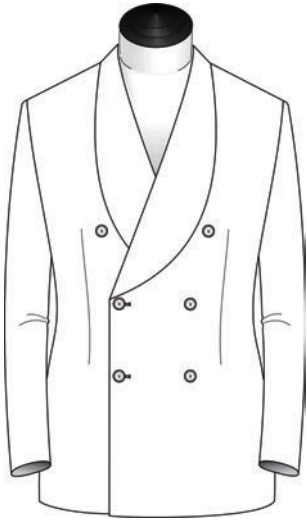
Closure

2B.4B.6B

Lapel Width

Curved Wide Peak 11.5 cm | 4 1/2"

Lapel



DB Curved Wide Shawl



Closure

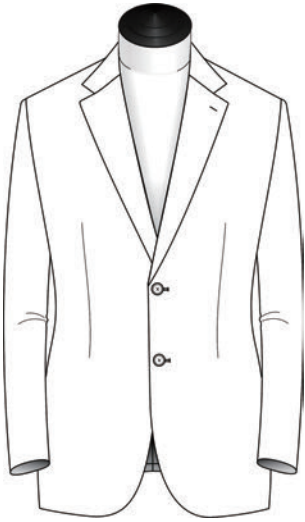
2B.4B.6B

Lapel Width

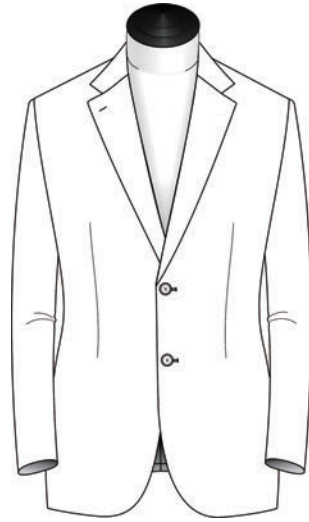
Shawl Collar 6 cm | 2 3/8"

Shawl Collar 7.6 cm | 3"

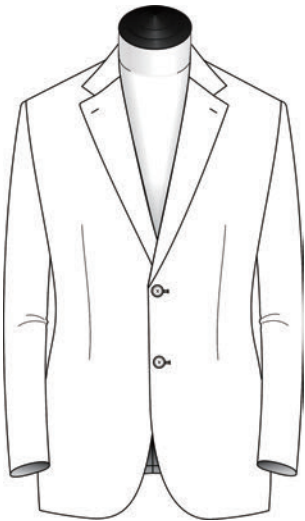
Lapel Buttonhole Position



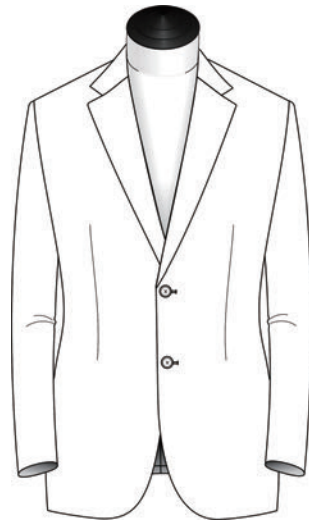
Left



Right

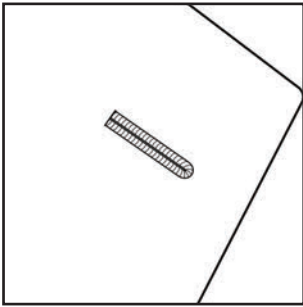


Left & Right

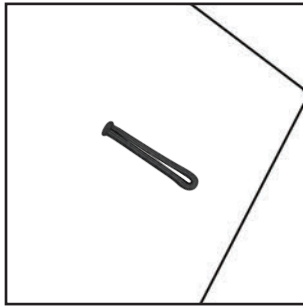


No Buttonhole

Lapel Buttonhole Style



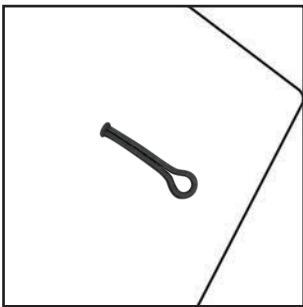
Normal



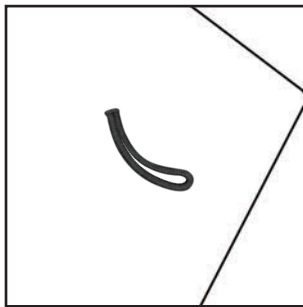
MB - 01



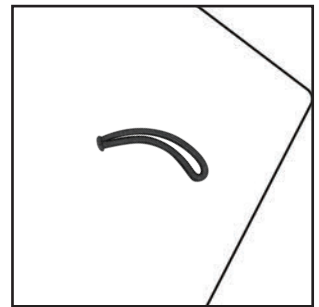
MB-01-Long



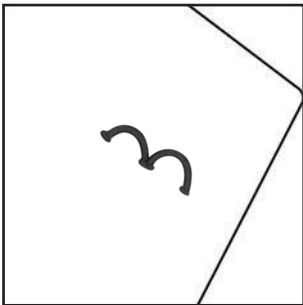
MB - 02



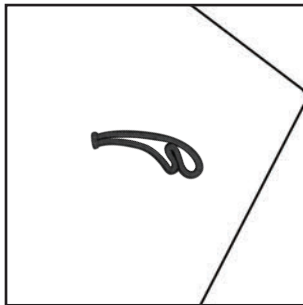
MB - 03



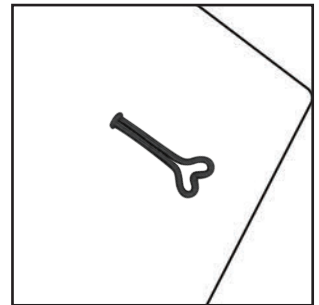
MB - 04



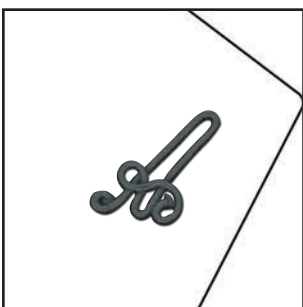
MB - 05



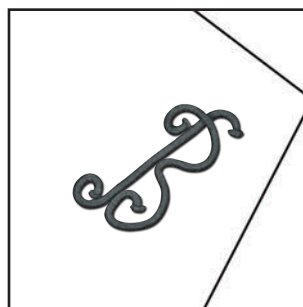
MB - 06



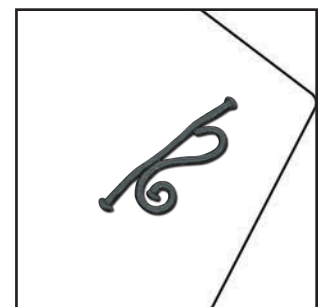
MB - 07



MB - 08

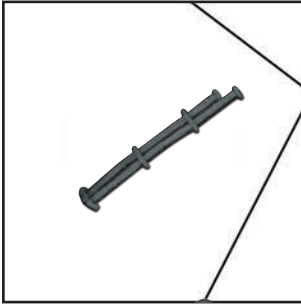


MB - 09

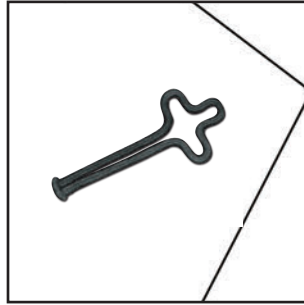


MB - 10

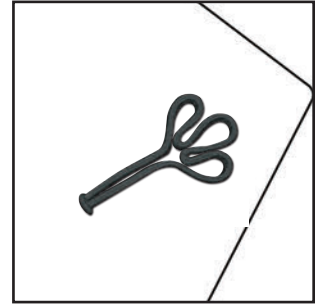
Lapel Buttonhole Style



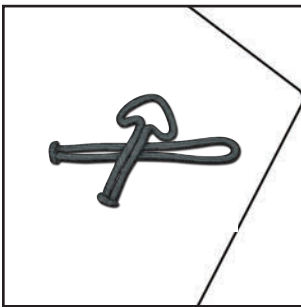
MB - 11



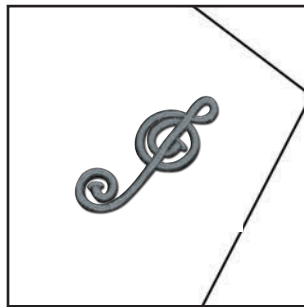
MB12



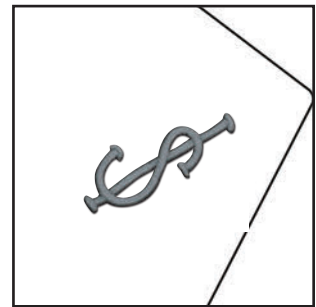
MB - 13



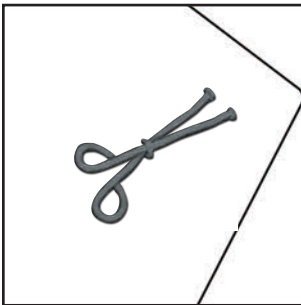
MB - 14



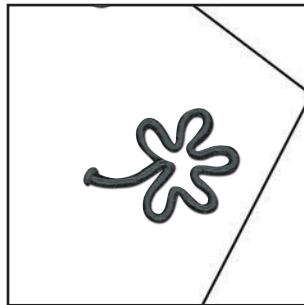
MB - 15



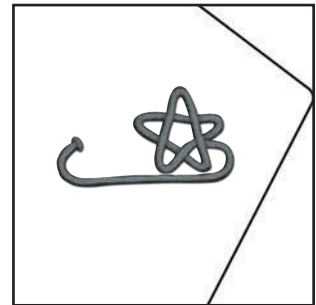
MB - 16



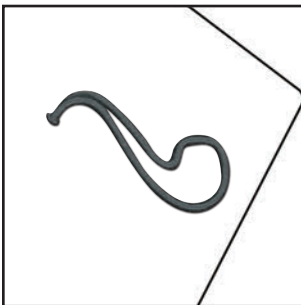
MB - 17



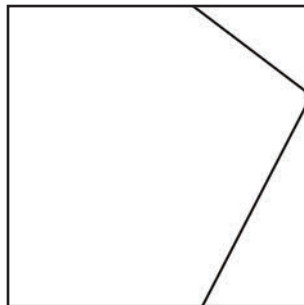
MB - 18



MB - 19

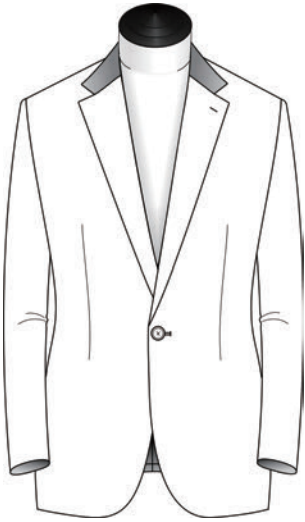


MB20



N/A

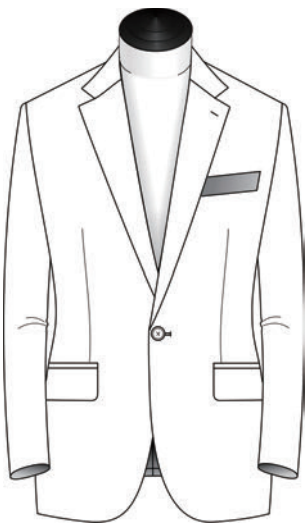
Formal Treatment Locations



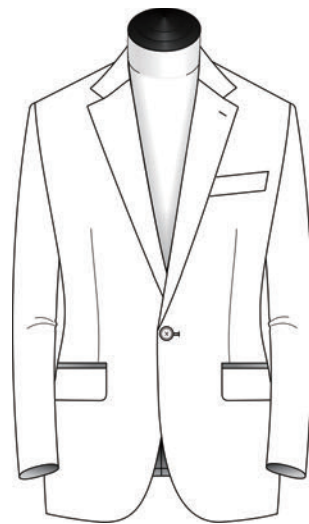
Formal Treatment Collar



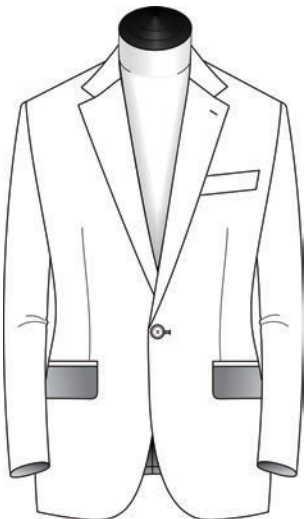
Formal Treatment Lapel



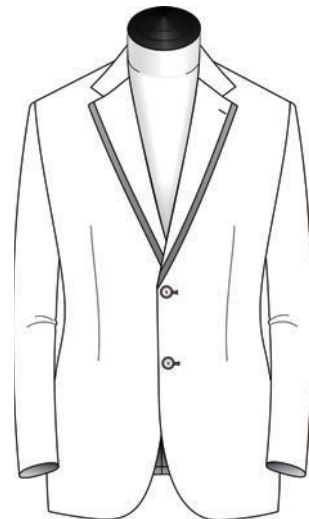
Formal Treatment Breast Pockets



Formal Treatment Pocket Jetting



Formal Treatment Side Flap Pockets

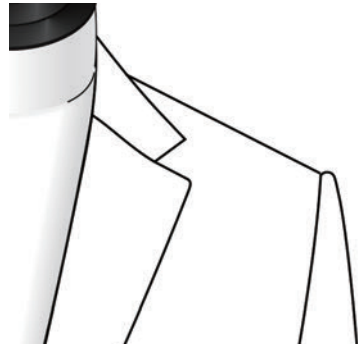


Formal Treatment Lapel Edge

Shoulder Type



Standard



Roped



Unconstructed (No Shoulder Pad)



Unconstructed With Pleats
(No Shoulder Pad)



Unconstructed With Pleats 2mm Pick
(No Shoulder Pad)



Soft

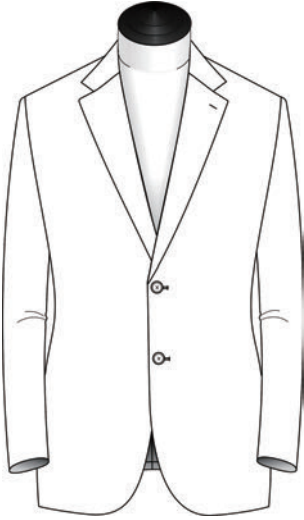


Soft With 2mm Pick

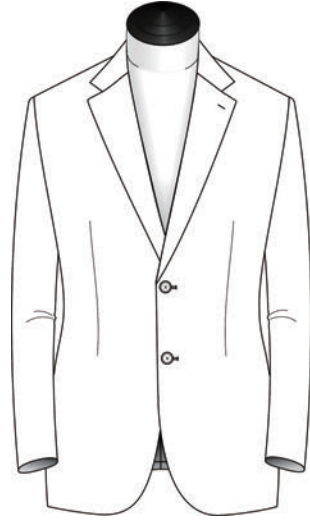


Soft With 6mm Pick

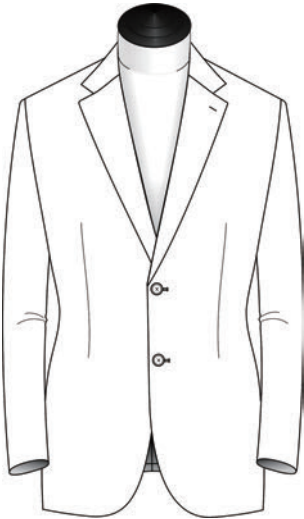
Front Dart



Undarted

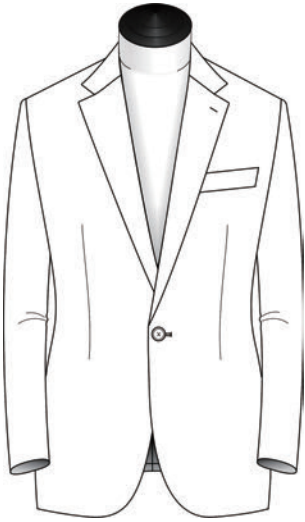


Normal Dart

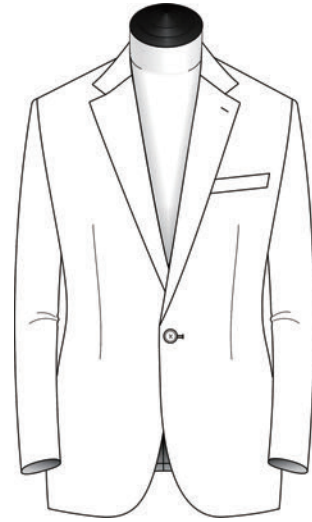


Prominent Dart

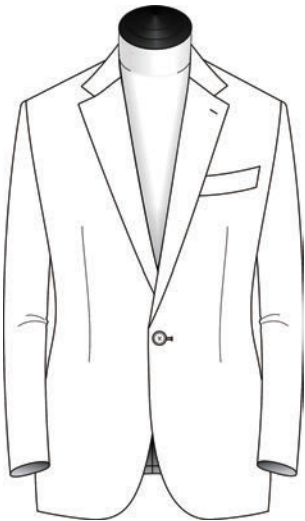
Chest Pocket



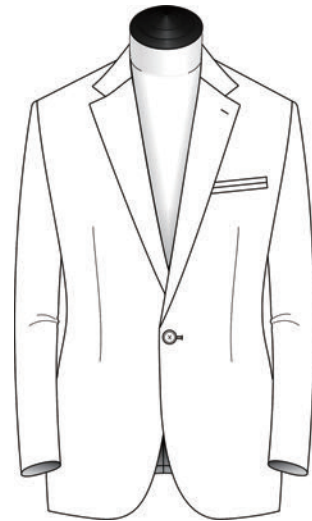
Welted 2.8 cm | 1 1/8"



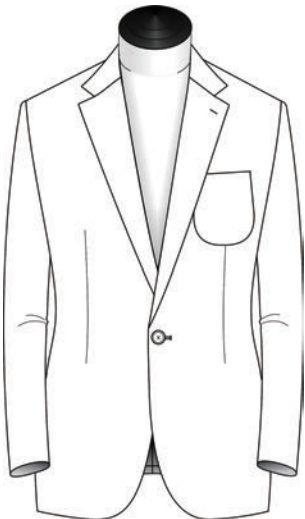
Welted 2.1 cm | 7/8"



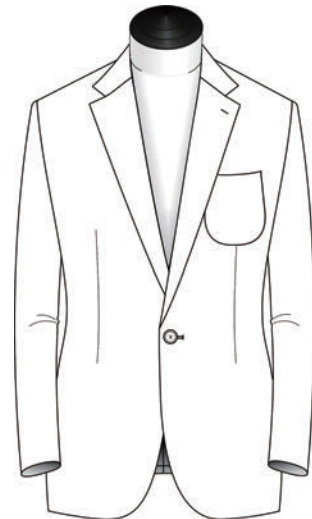
Round Welted 2.8 cm | 1 1/8"



Jetted

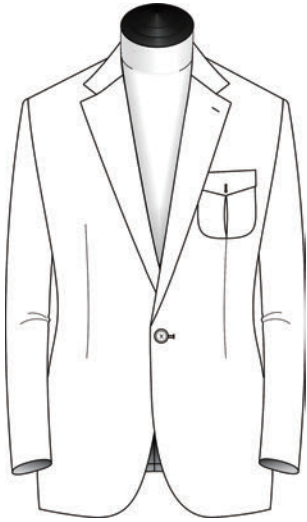


Patch

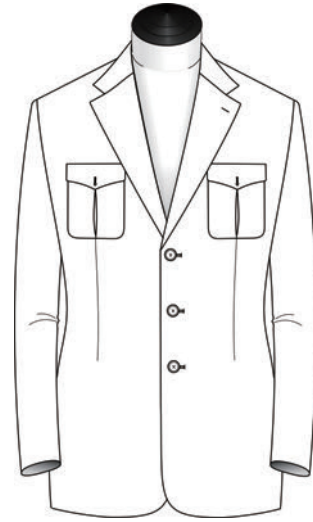


Patch Rounded

Chest Pocket

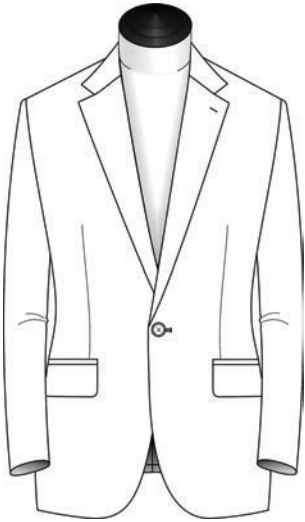


Patch with Flap & Pleat

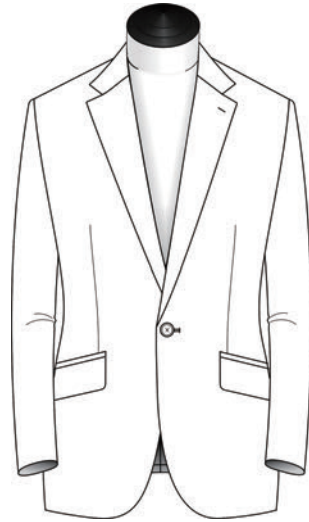


Bellowed Patch w Pointed Flap & Button

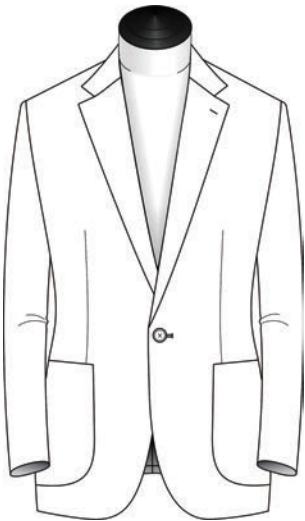
Side Pockets



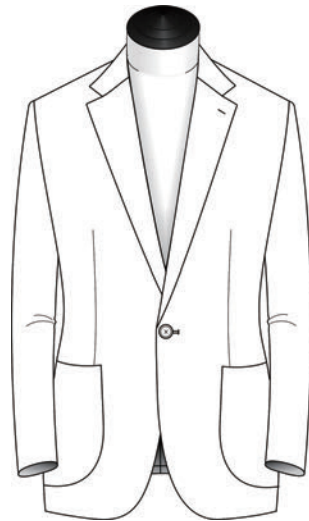
Flap Straight



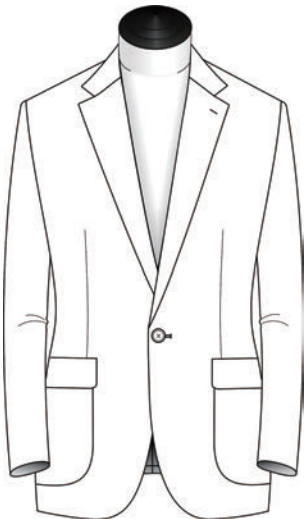
Flap Slanted



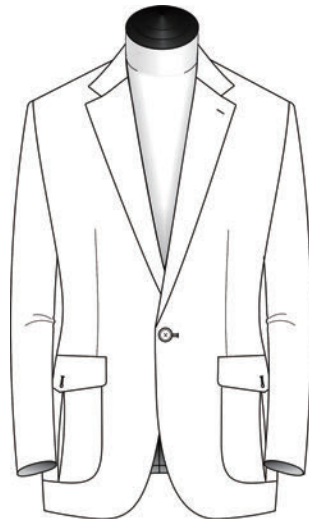
Patch



Patch Rounded

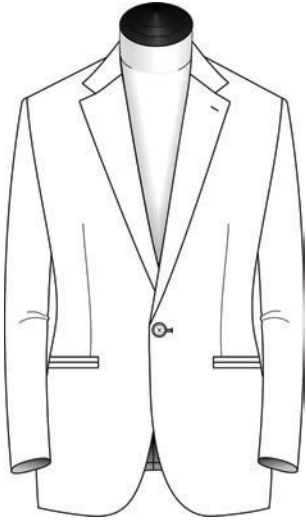


Patch With Flap

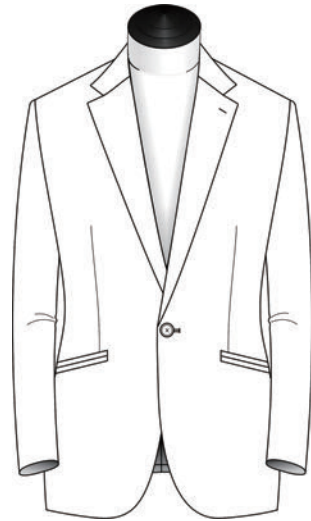


Patch w Flap & Pleat

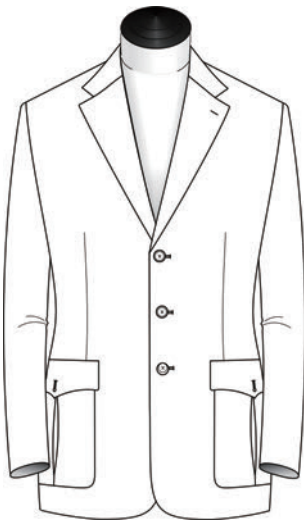
Side Pockets



Jetted Straight

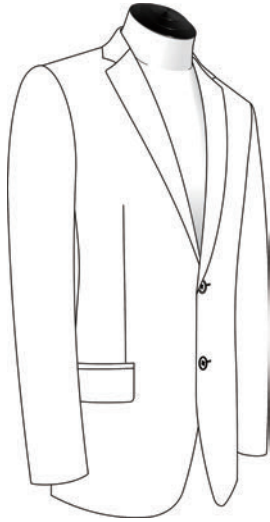


Jetted Slanted

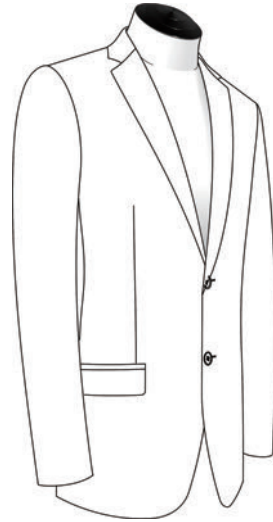


Bellowed Patch w Pointed Flap & Button

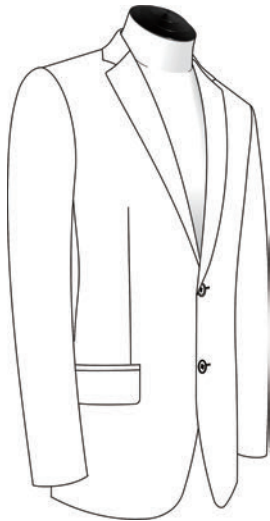
Side Pocket Flap Size



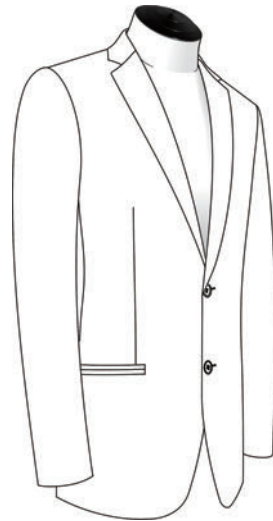
Regular 5 cm | 2"



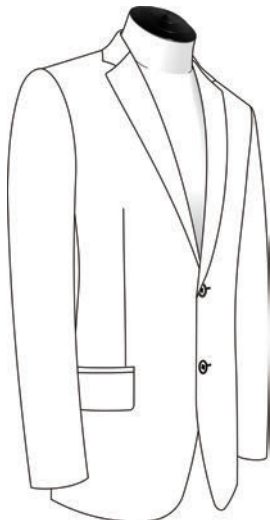
Narrow 4 cm | 1 5/8"



Wide 7 cm | 2 3/4"

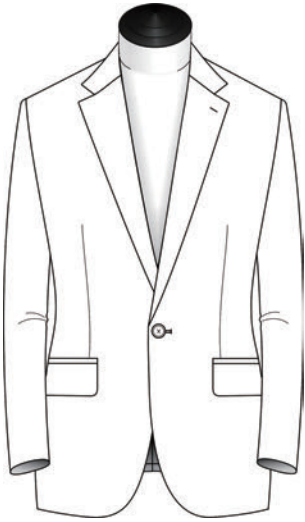


N/A

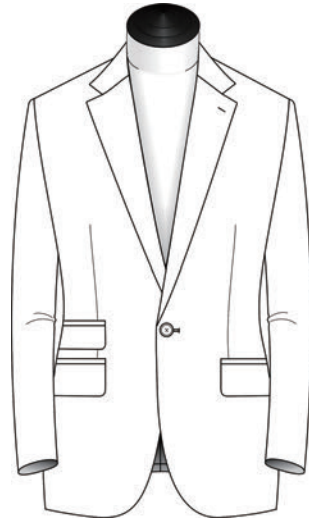


5.5cm

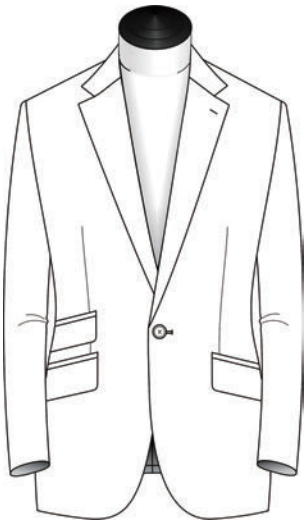
Ticket Pockets



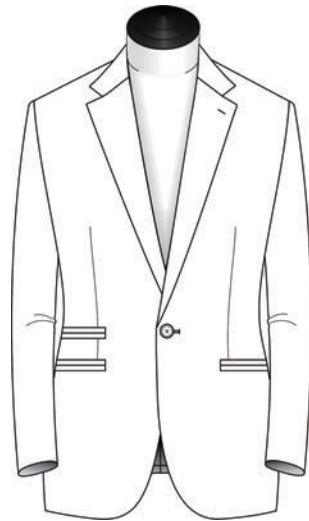
None



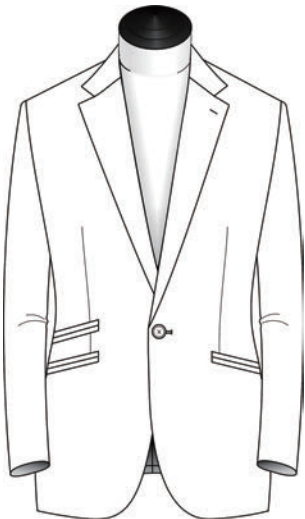
Flap Straight



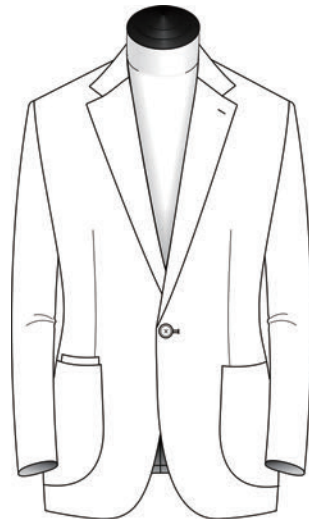
Flap Slanted



Jetted Straight

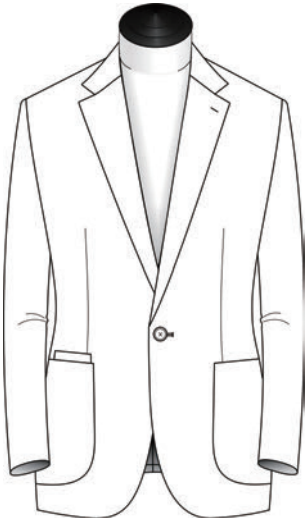


Jetted Slanted



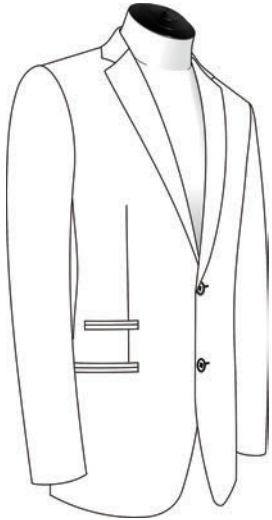
Patch Rounded

Ticket Pockets

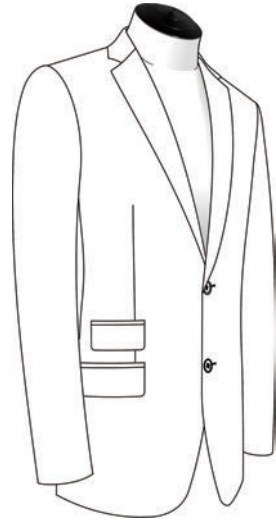


Patch

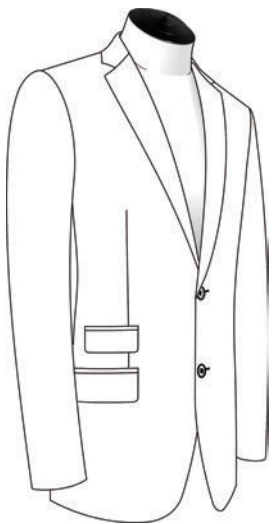
Ticket Pocket Flap Size



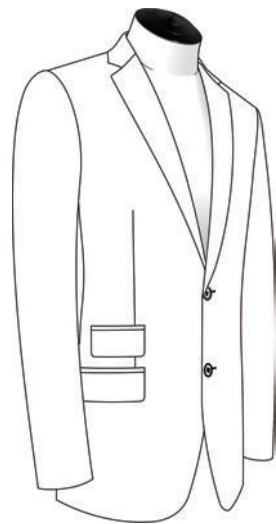
No



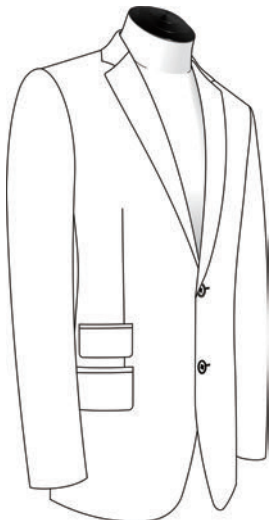
Regular 4.5 cm | 1 3/4"



Narrow 3.5 cm | 1 3/8"

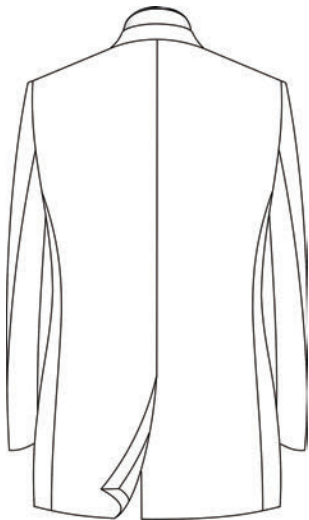


Wide 6.5 cm | 2 1/2"

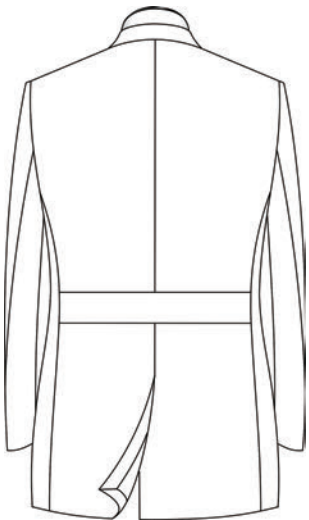


5cm

Back Style

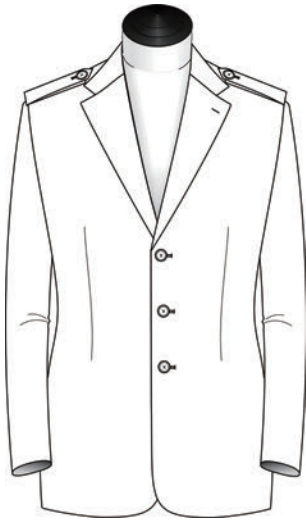


Standard

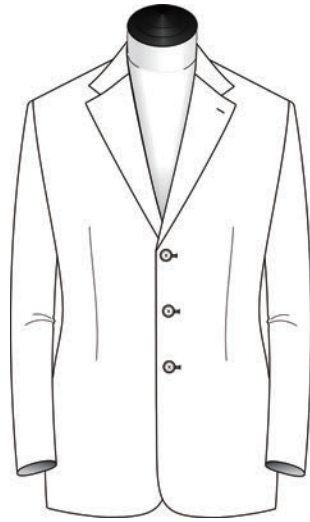


Self Belt Waistband

Shoulder Epaulettes

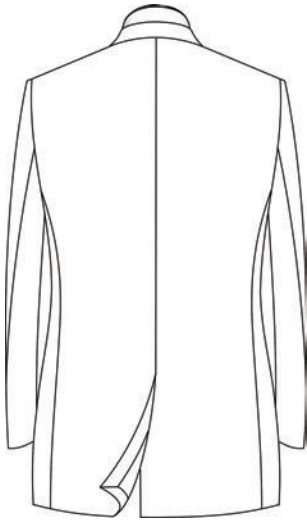


Yes

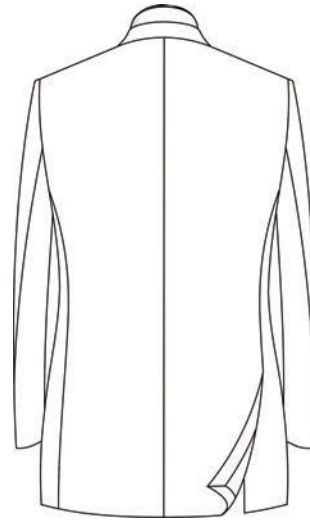


N/A

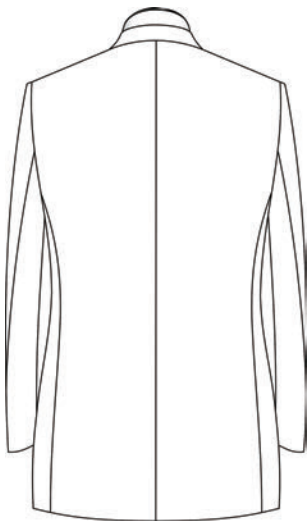
Vents



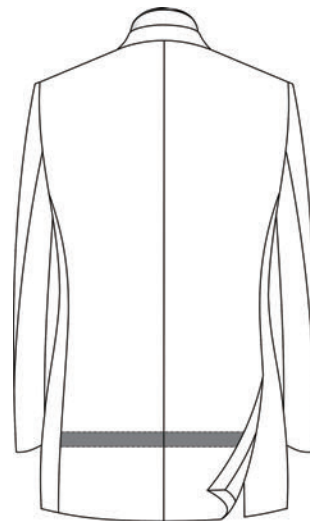
1 - Center



2 - Sides

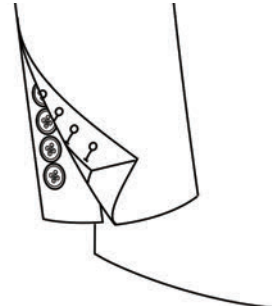
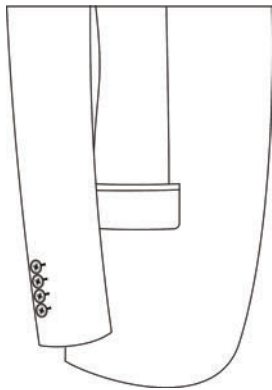


0 - None

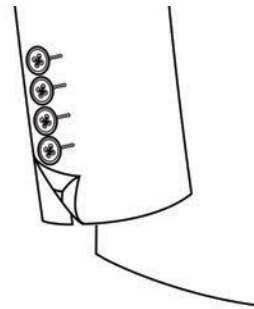
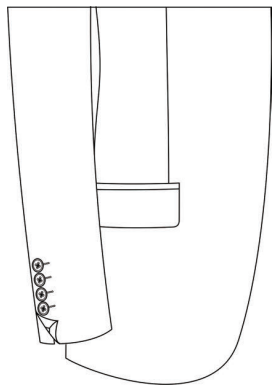


2 - Sides With Int. Strap

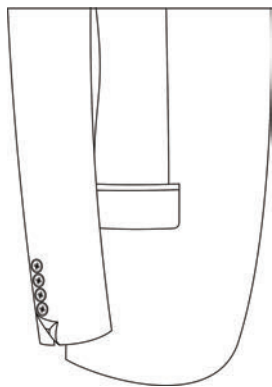
Cuff Finishing



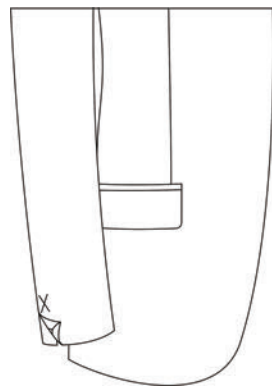
Working Buttonholes



Imitation Buttonholes

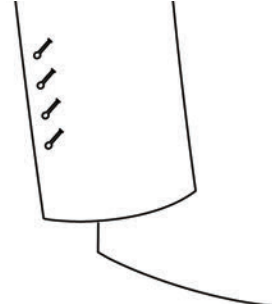
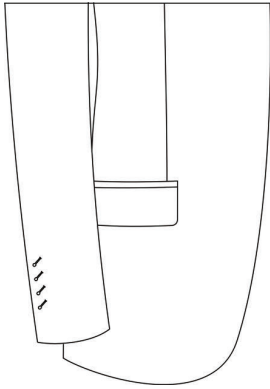


Buttons With No Buttonholes

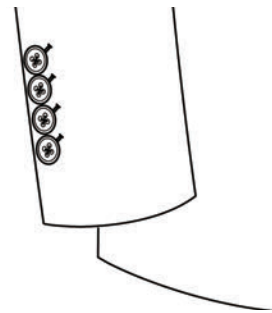
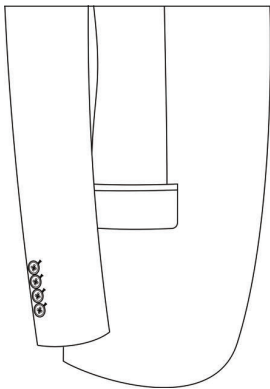


No Buttons Or Buttonholes

Cuff Finishing



Slanted Working Buttonholes

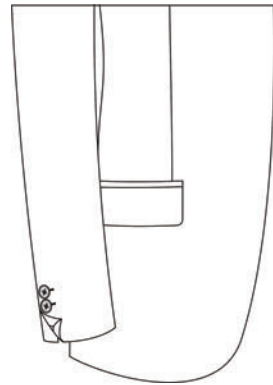


Slanted Imitation Buttonholes

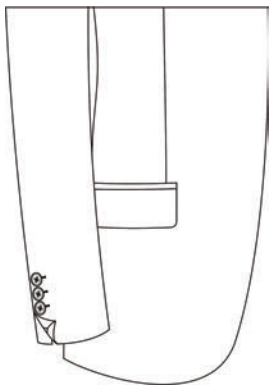
Sleeve Button Qty



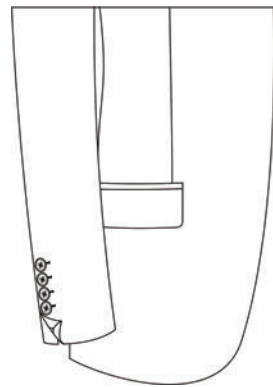
1 Button



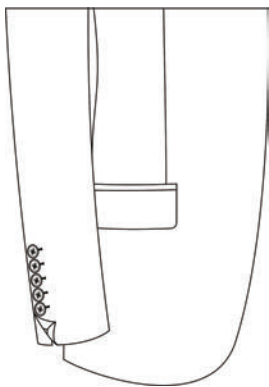
2 Button



3 Button

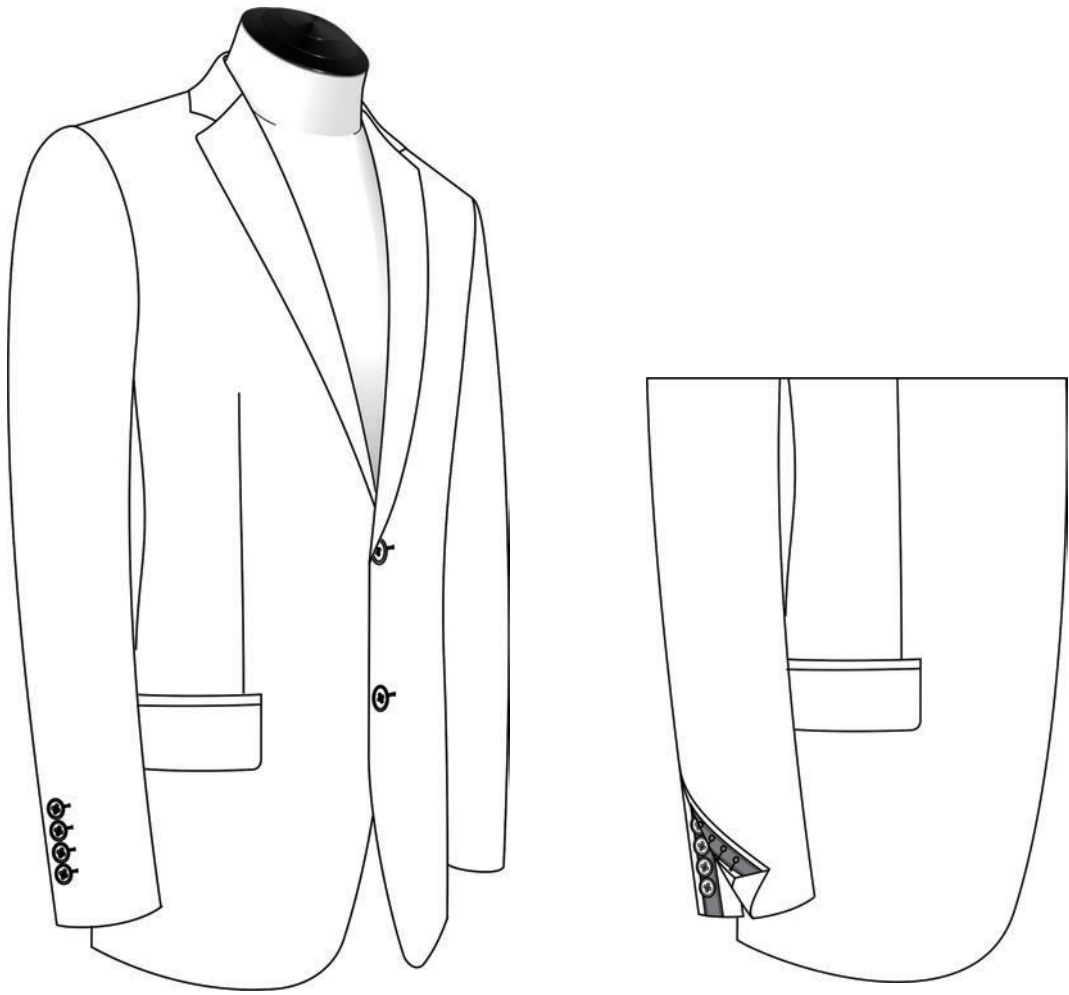


4 Button

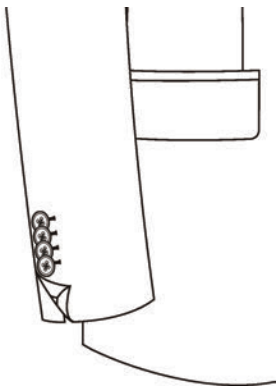


5 Button

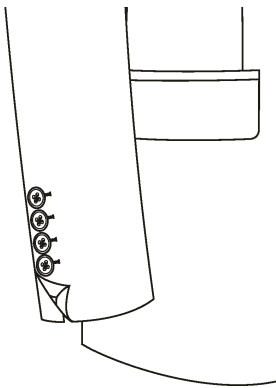
Sleeve Ribbon



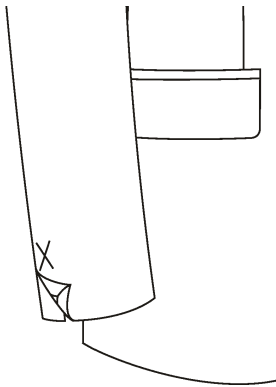
Sleeve Button Spacing



Kissing

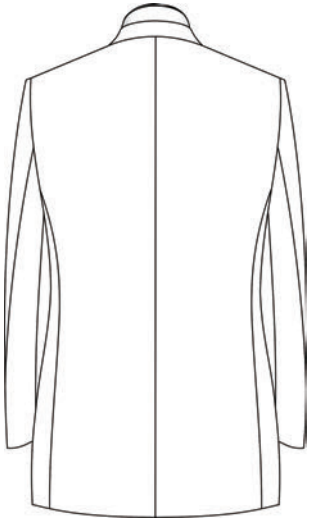


Non Kissing

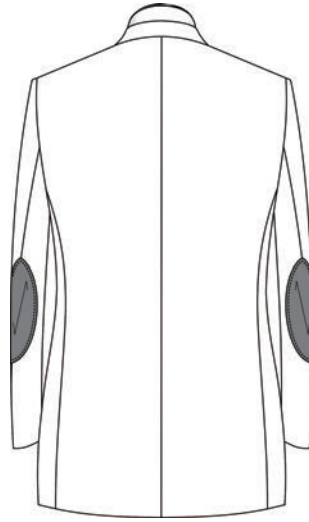


N/A

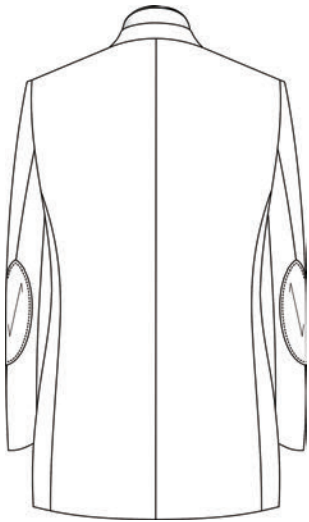
Elbow Patches



No

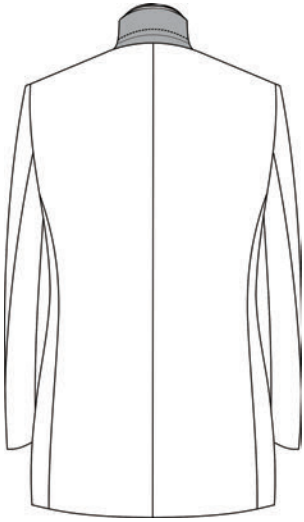


Suede

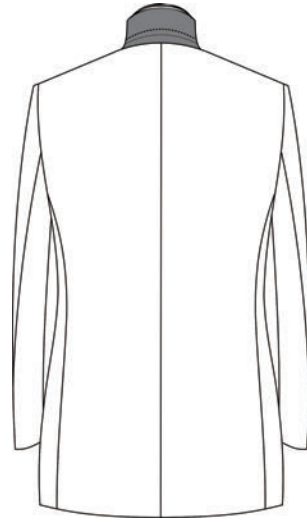


Fabric

Melton Undercollar

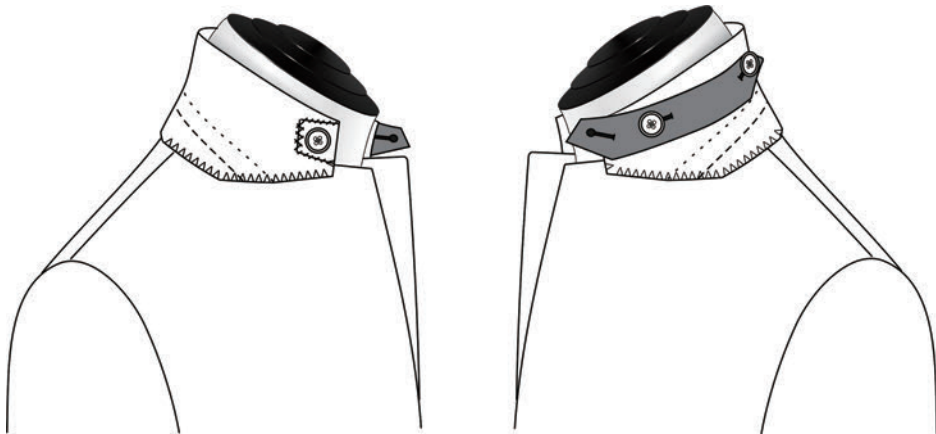


Melton

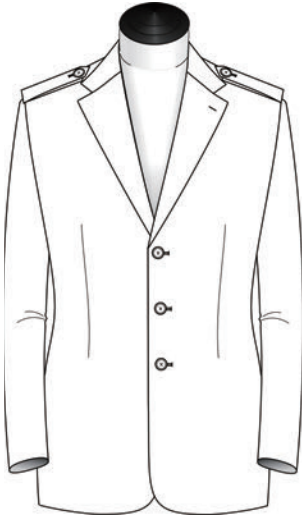


Suede

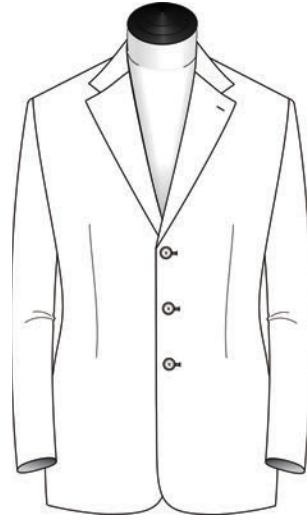
Throat Tab



Shoulder Tab

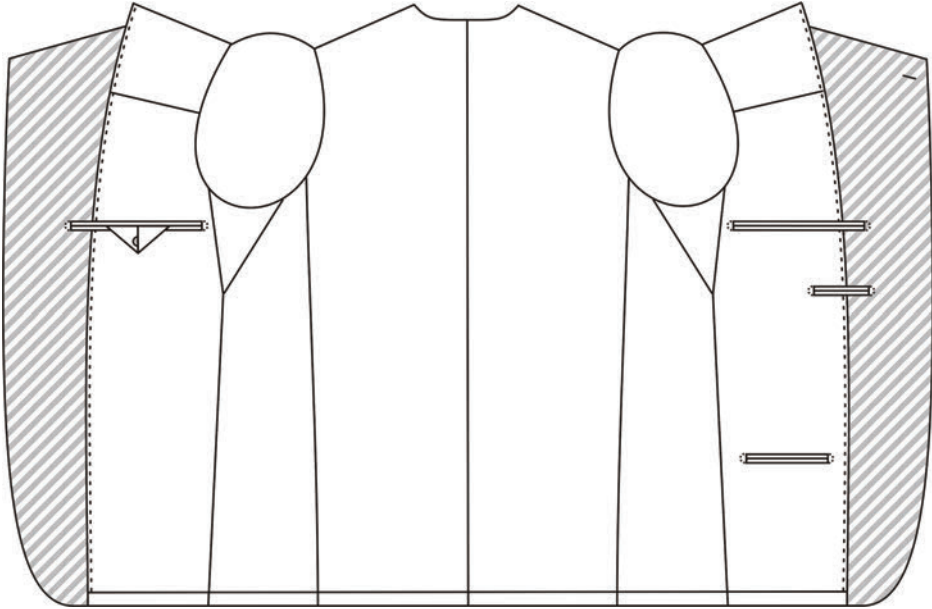


Yes

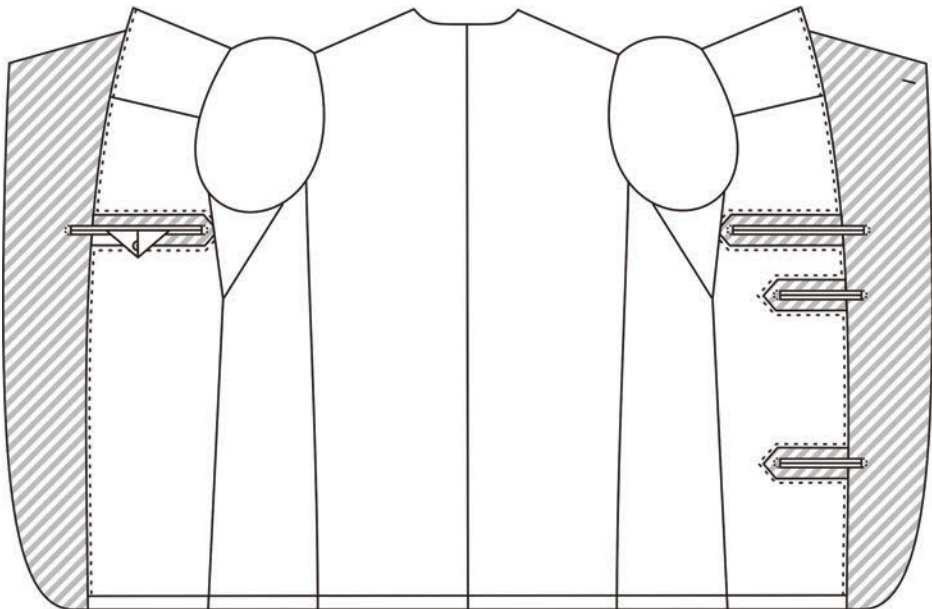


N/A

Interior Construction

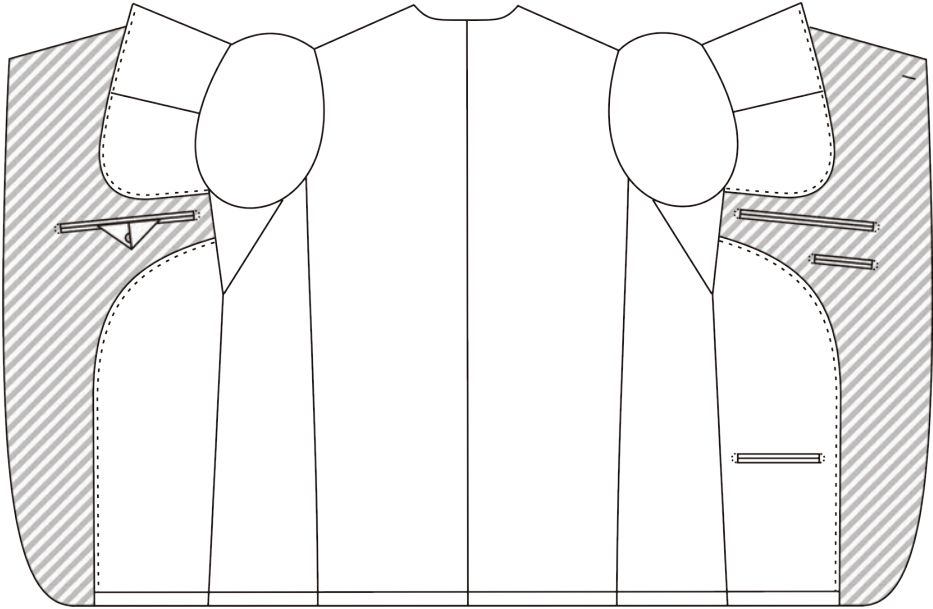


Classic With Fabric Jetted Pockets

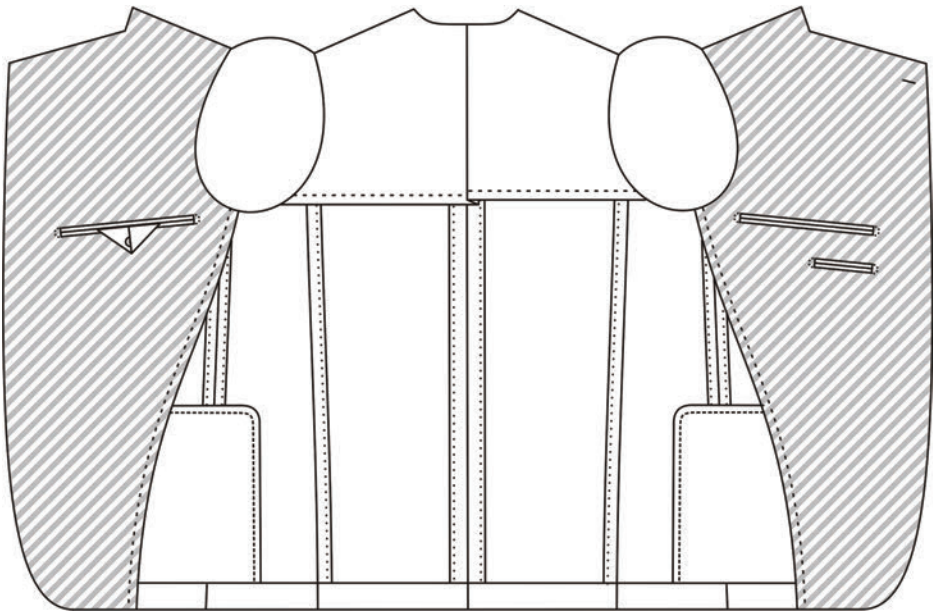


Classic With Cloth Edged Pockets

Interior Construction

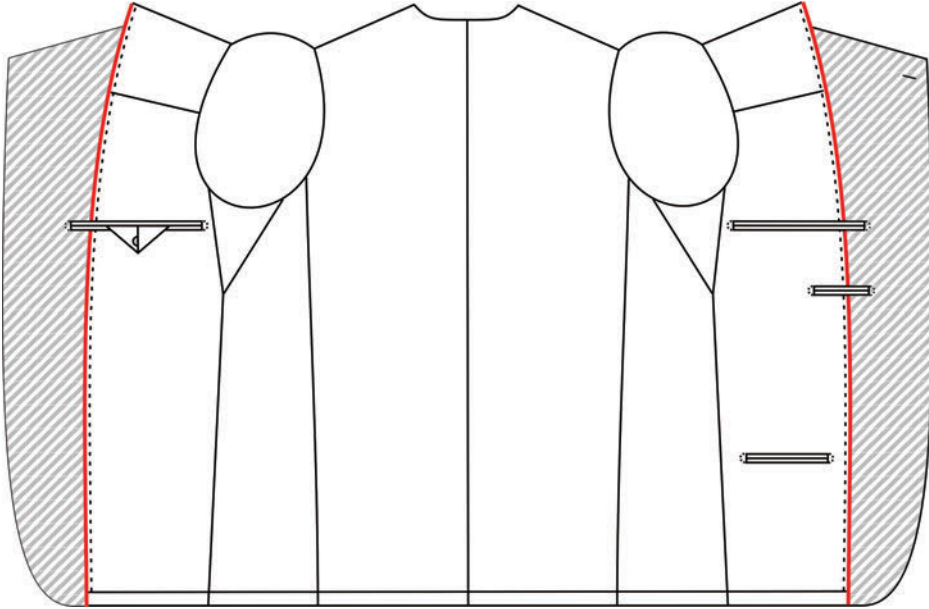


Curved French Facing

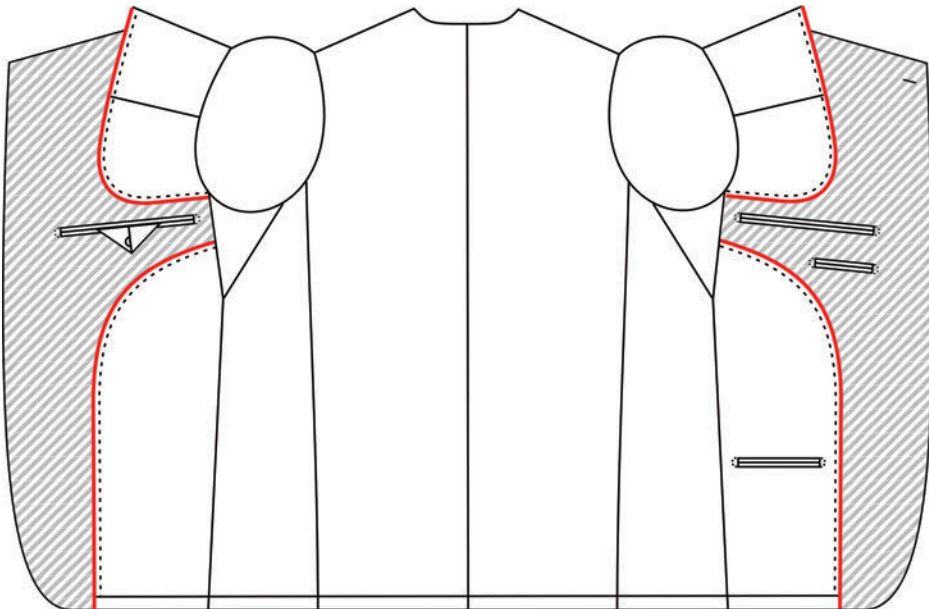


Unlined With Fabric Facing

Lining Edge Piping Treatment

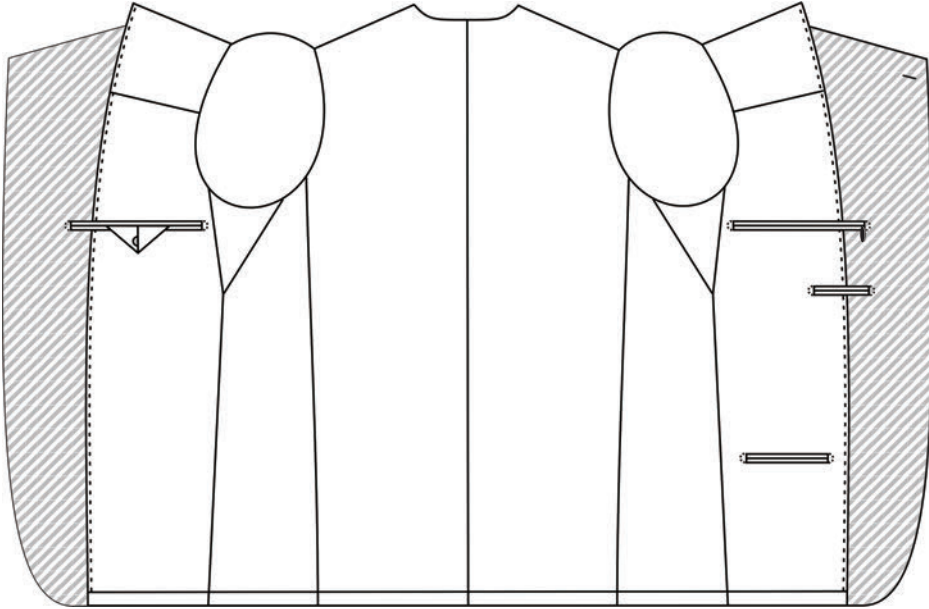


Classic with Fabric Jetted Pockets Piping

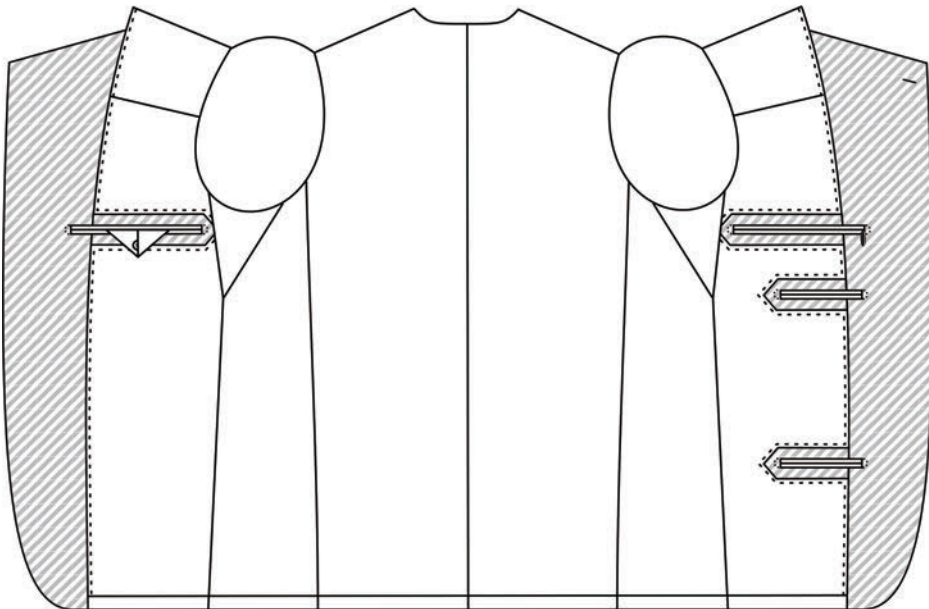


Curved French Facing Piping

Interior Left Pocket Zipper

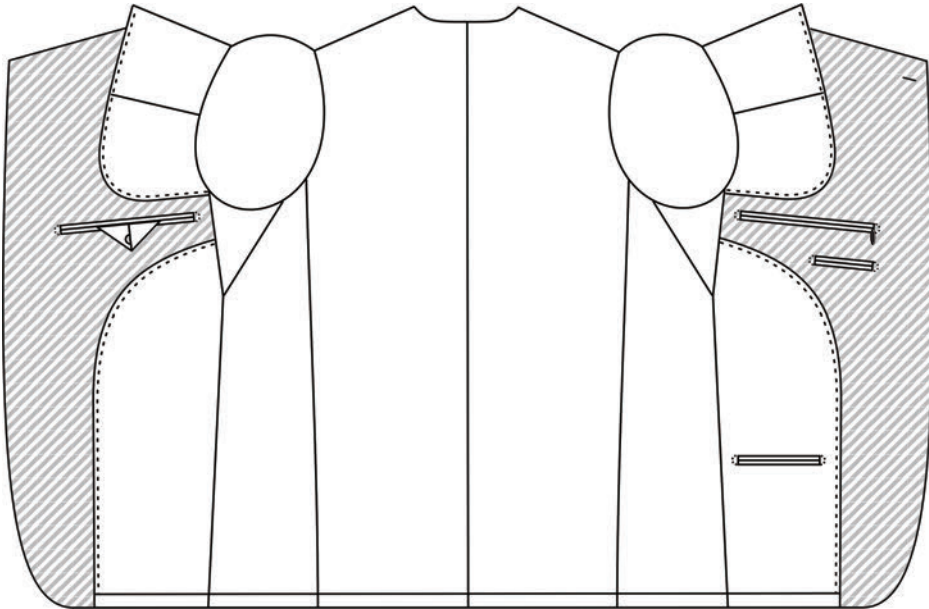


Jet

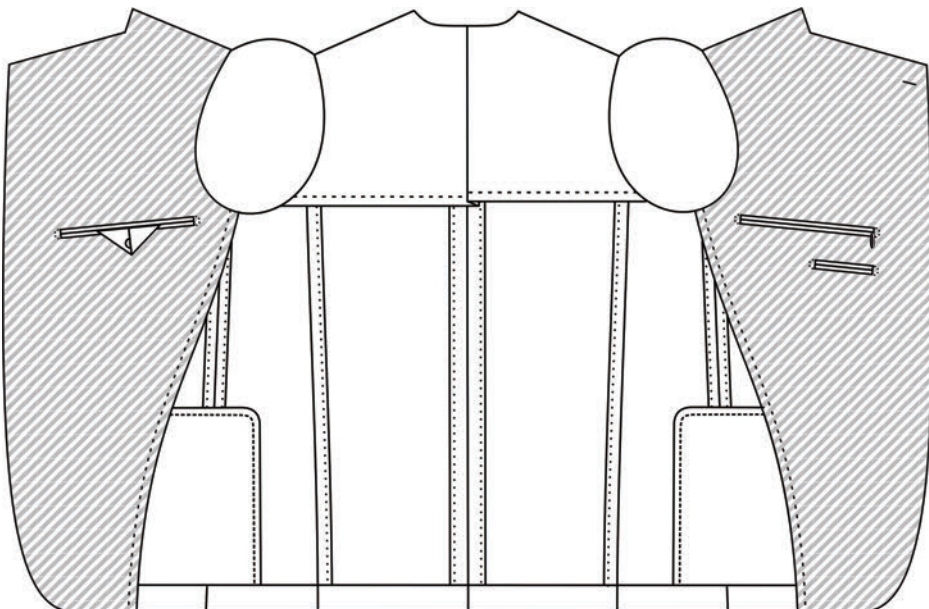


Cloth Edged

Interior Left Pocket Zipper

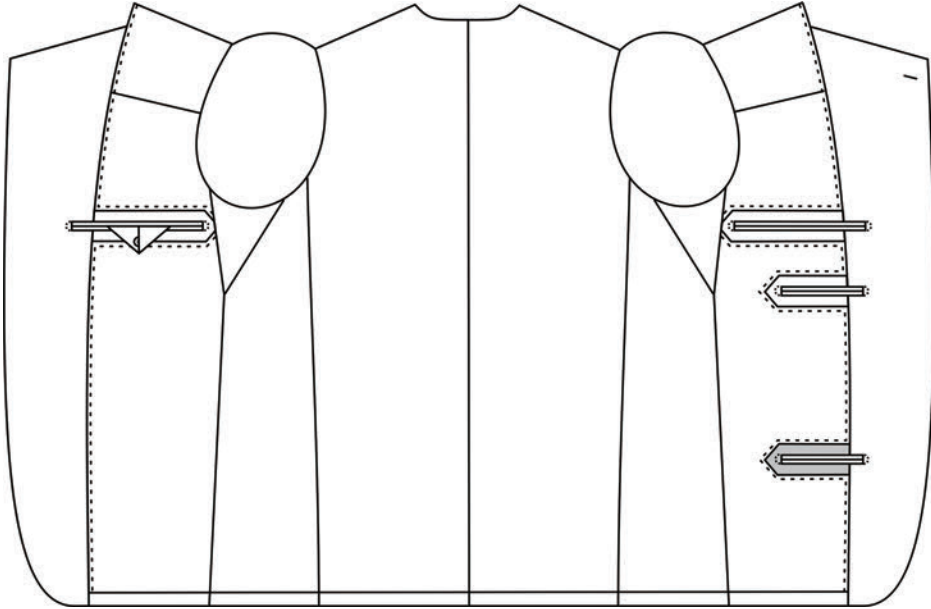


Curved French Facing

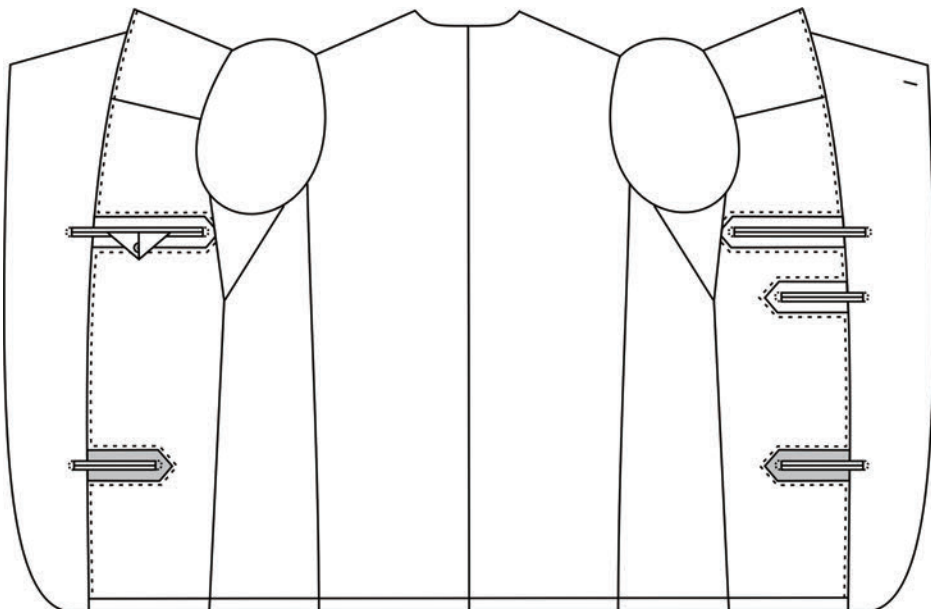


Unlined

Utility Pocket

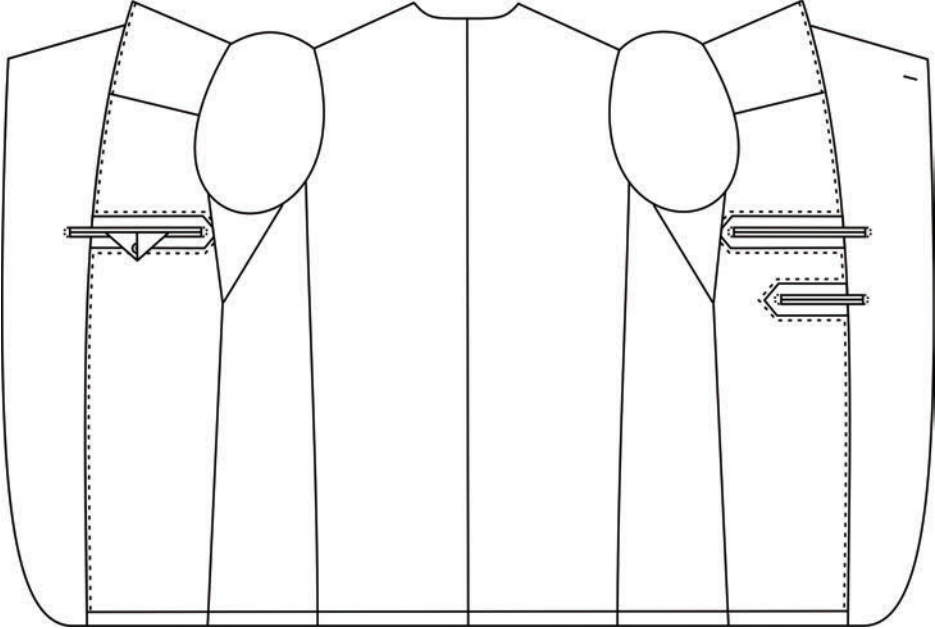


Left(standard)



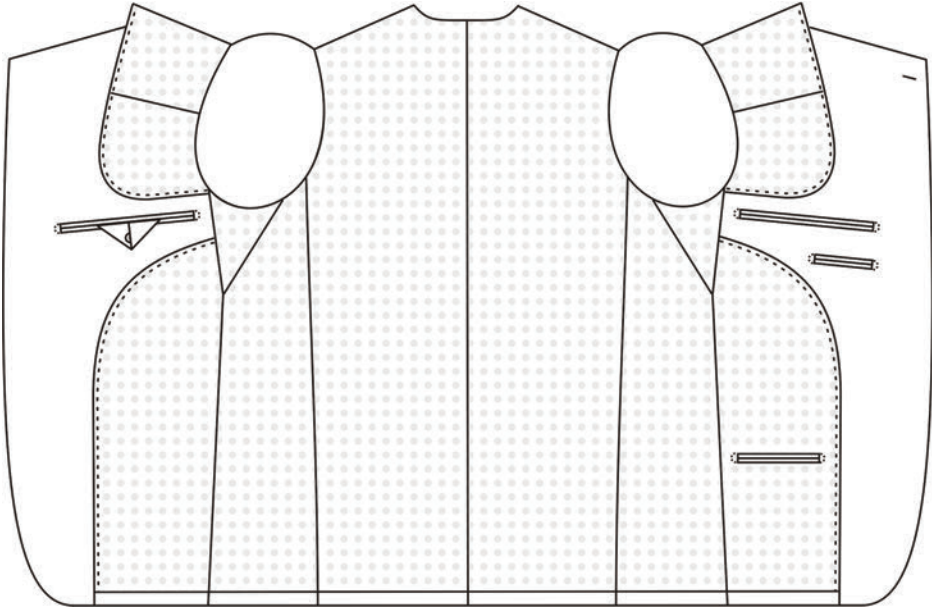
Left&Right

Utility Pocket

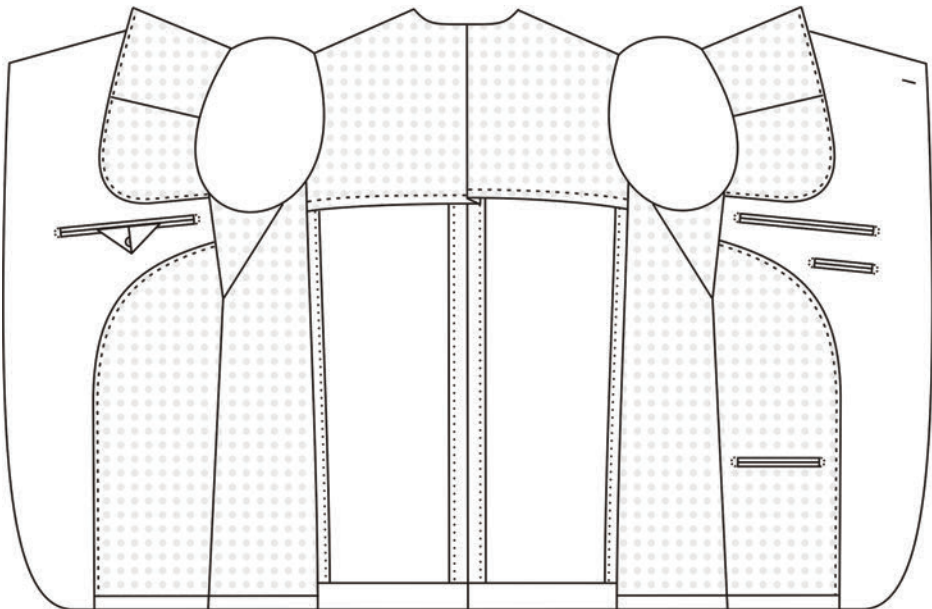


N/A

Lining Placement

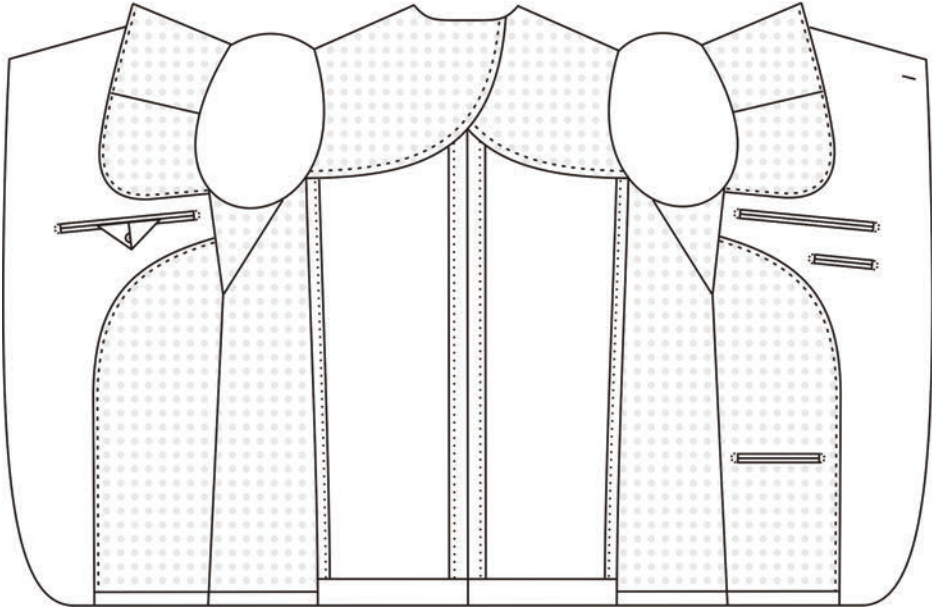


Fully Lined

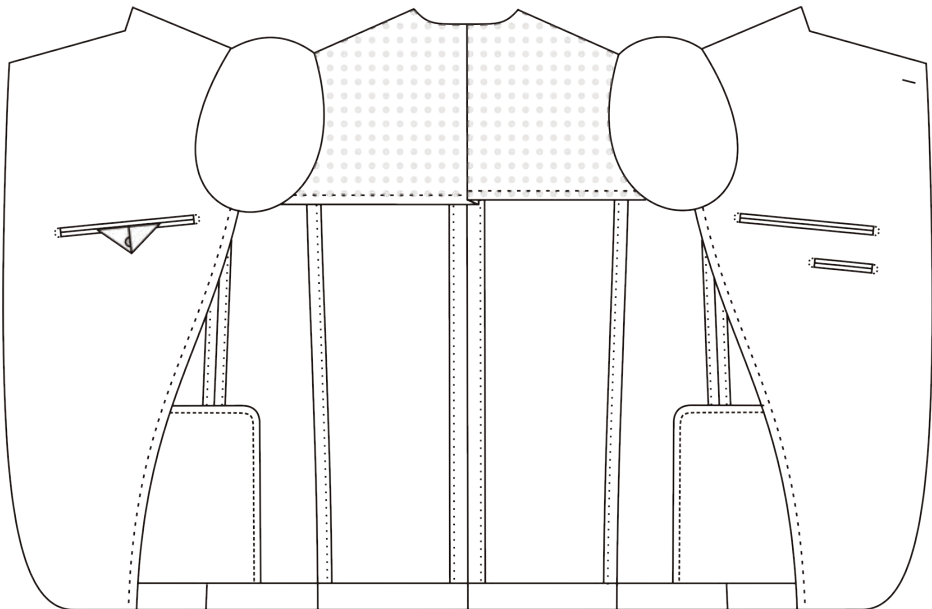


Half Lined With Round Wedge

Lining Placement

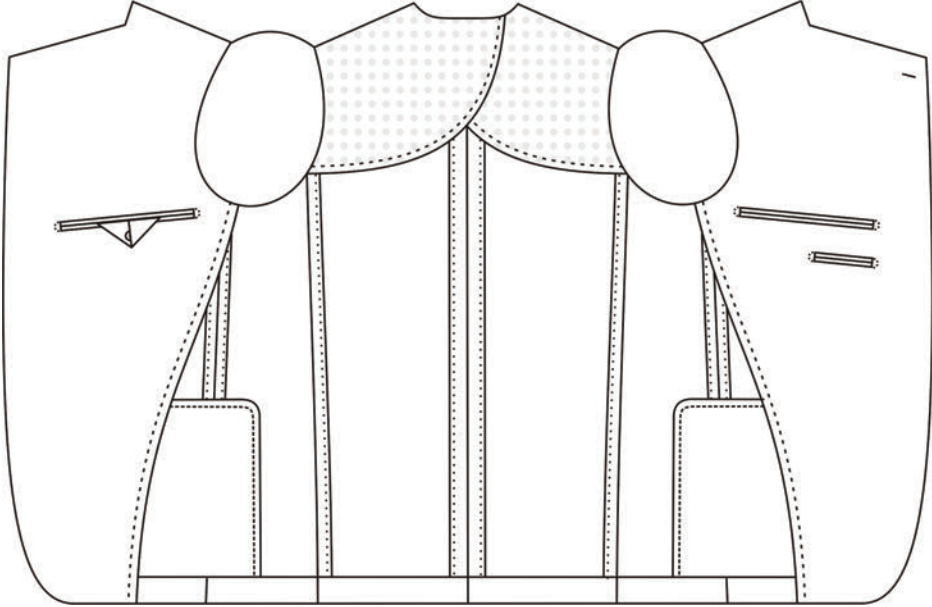


Half Lined With Q Wedge



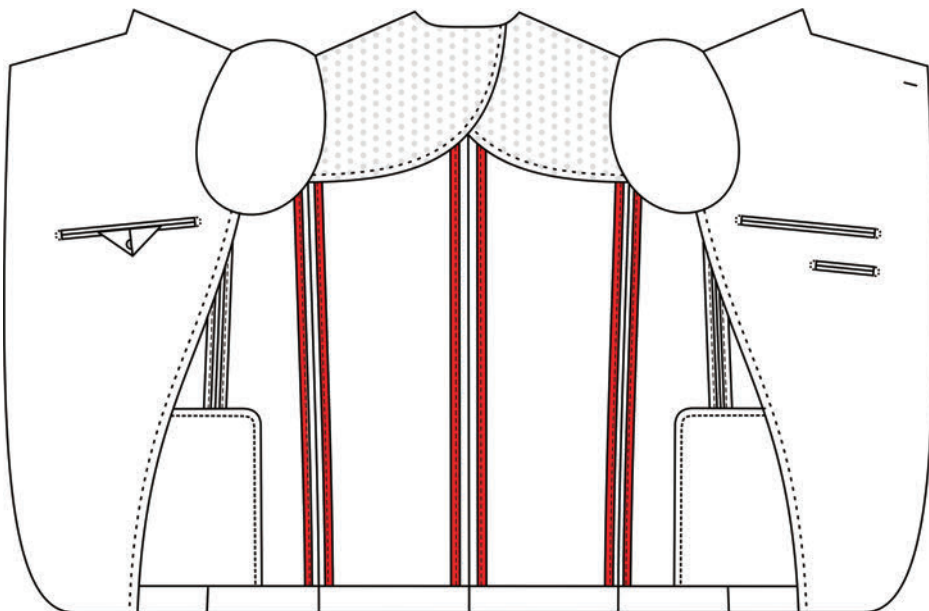
Unlined With Center Wedge

Lining Placement

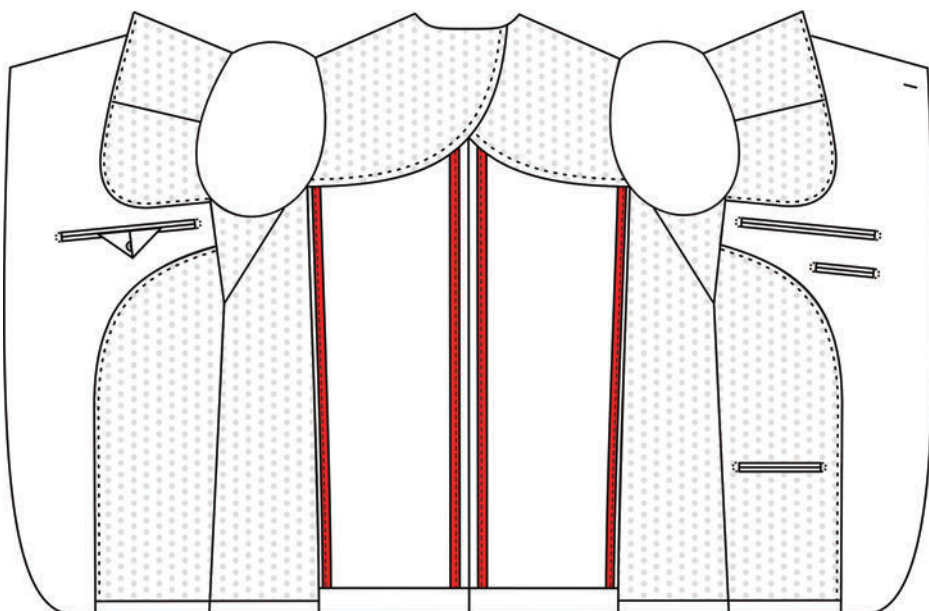


Unlined With Q Wedge

Exposed Seam Piping w Lining

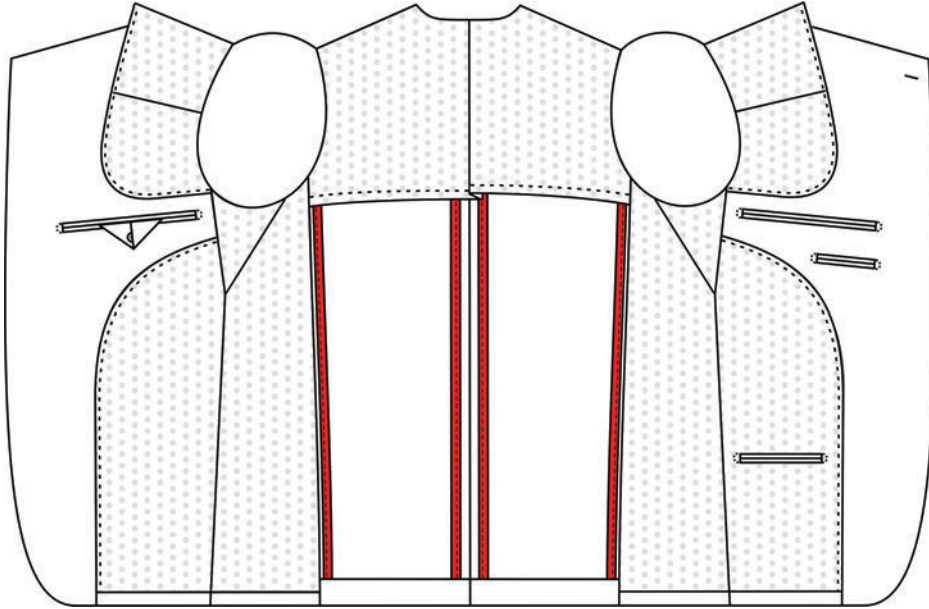


Unlined with Q Wedge Piping

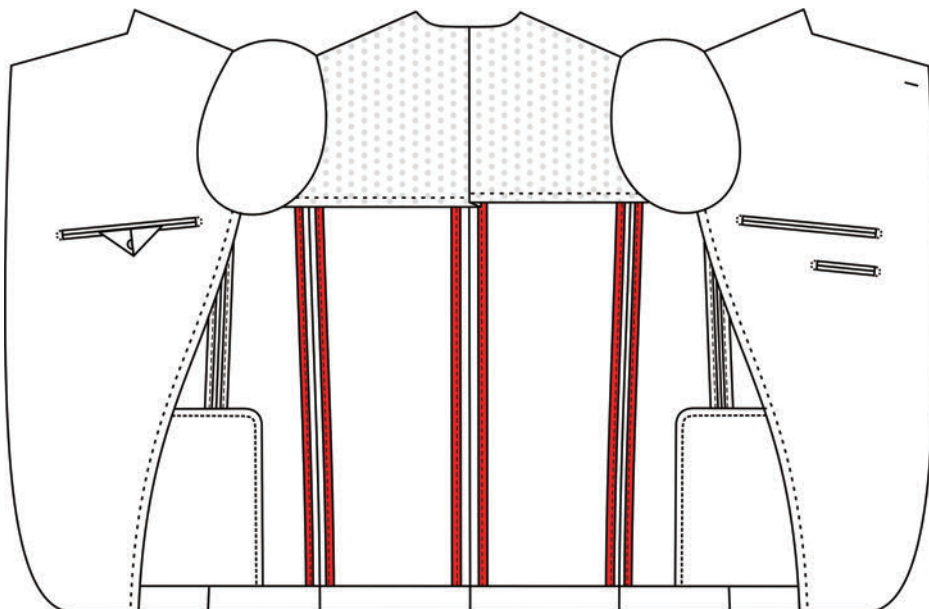


Half Lined with Q Wedge Piping

Exposed Seam Piping w Lining

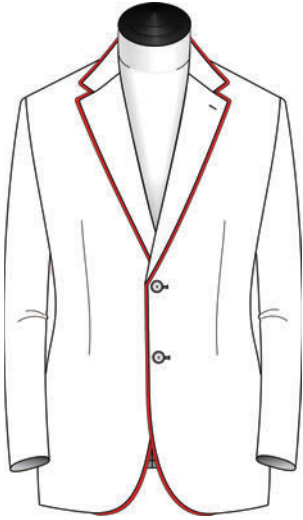


Half Lined with Round Wedge Piping

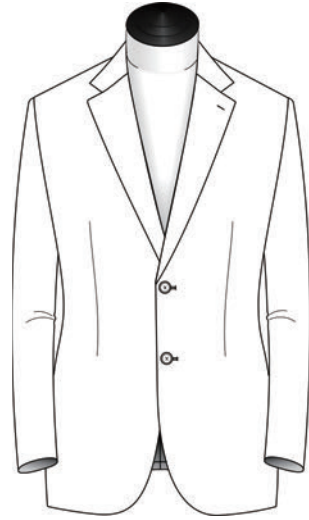


Unlined with Center Wedge Piping

Front & Collar Piping

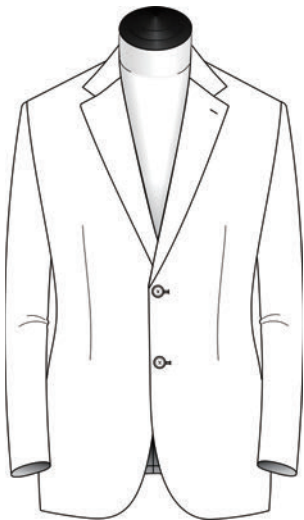


Yes

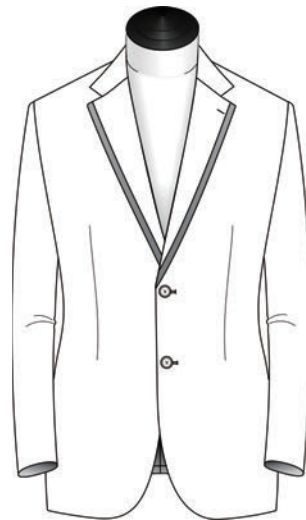


N/A

Formal Treatment Lapel Edge

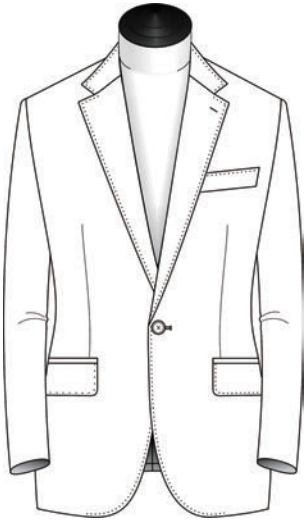


N/A

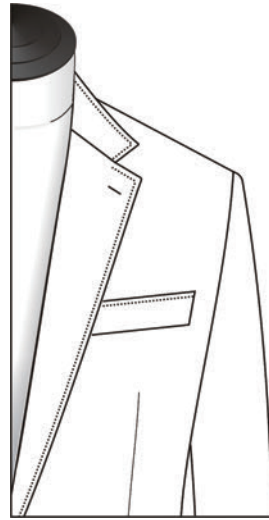


Yes

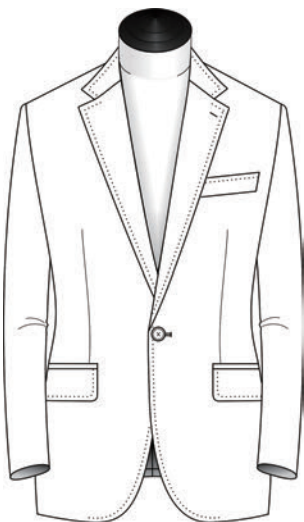
Pick Stitching



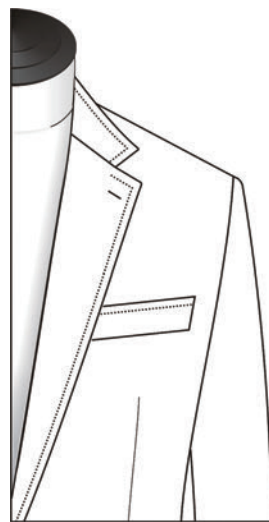
2mm



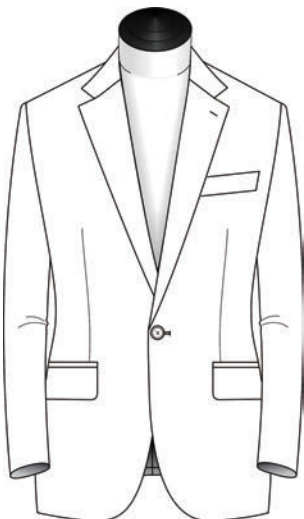
2mm



6mm

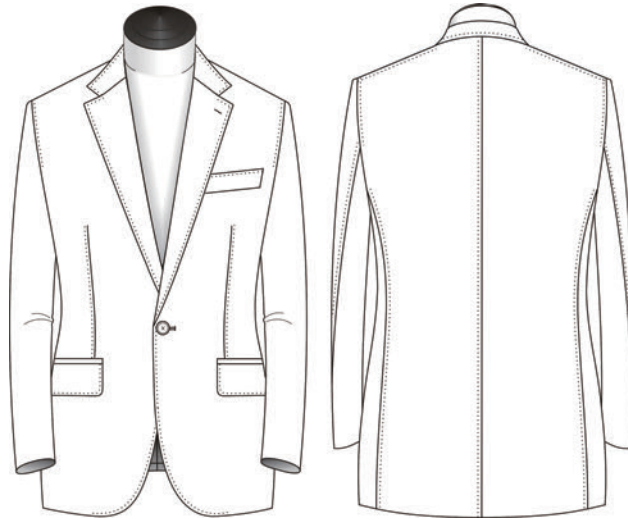


6mm



No

Pick Stitching

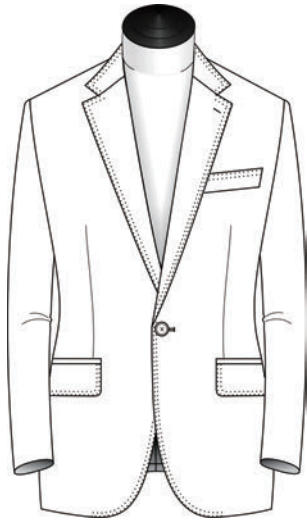


2mm Full



6mm Full

Pick Stitching

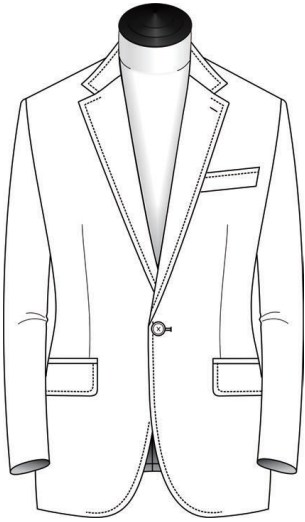


Double Stitching

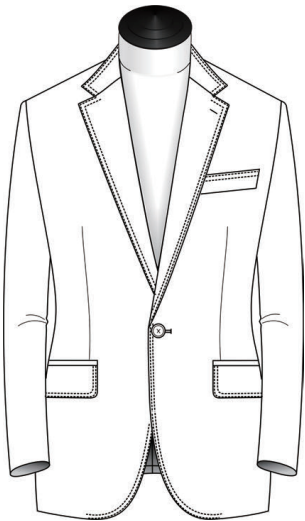
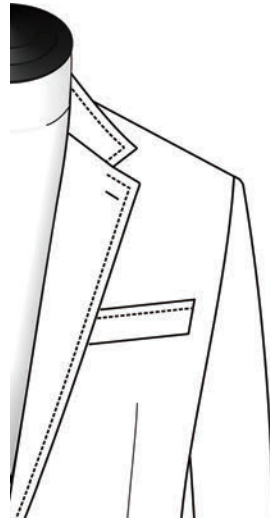


Double Stitching Full

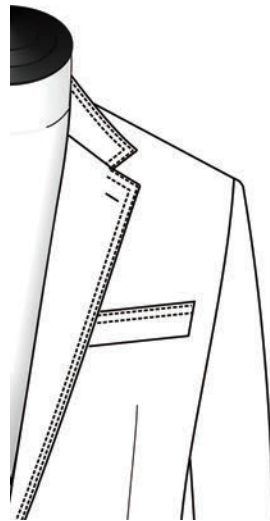
Top Stitching



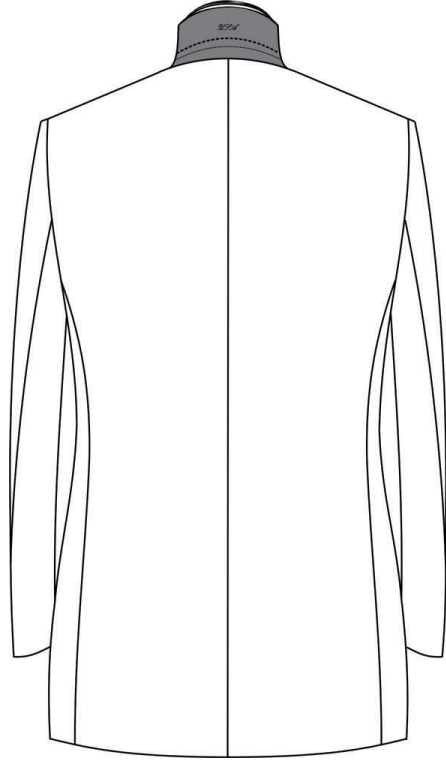
6mm



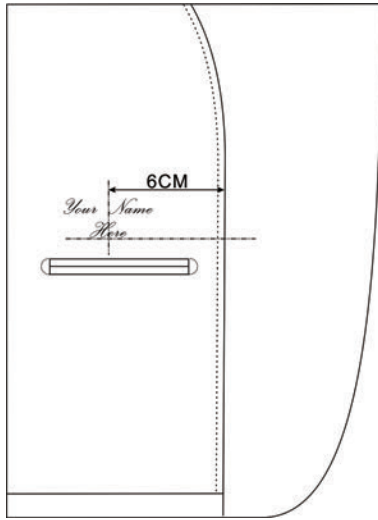
Double



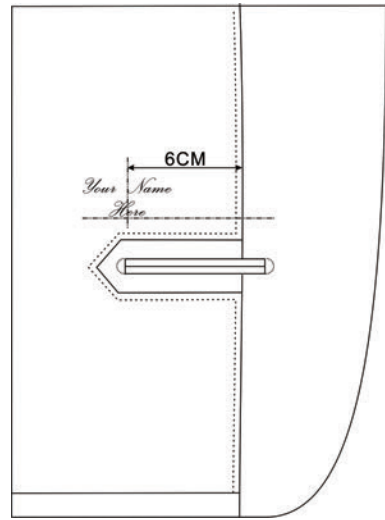
Under Collar Monogram Text



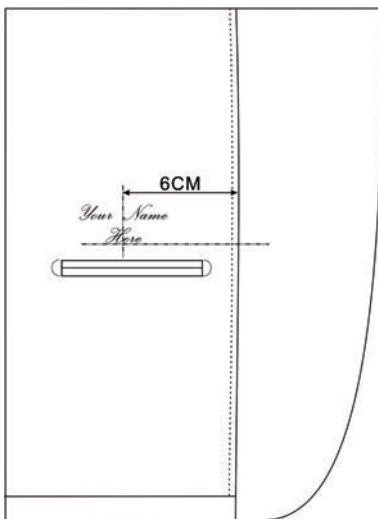
Interior Lining Monogram



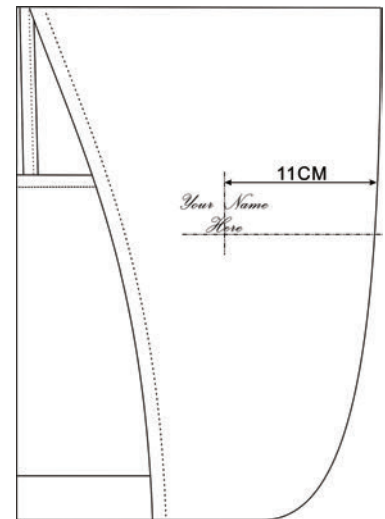
Curved French Facing



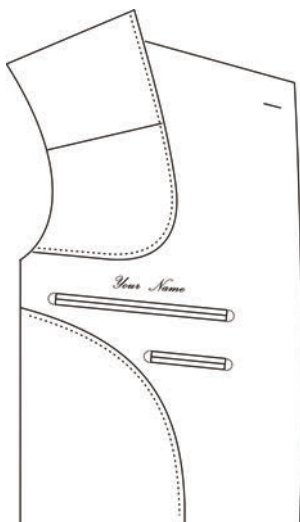
Cloth Edged



Jet

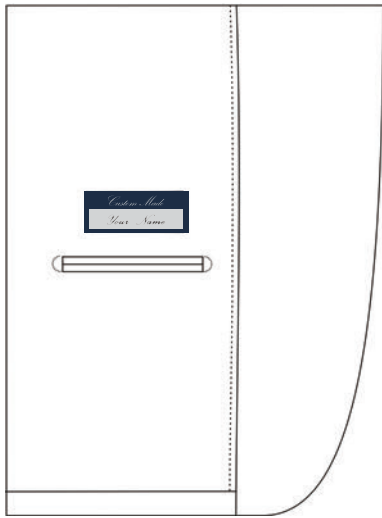


Unlined

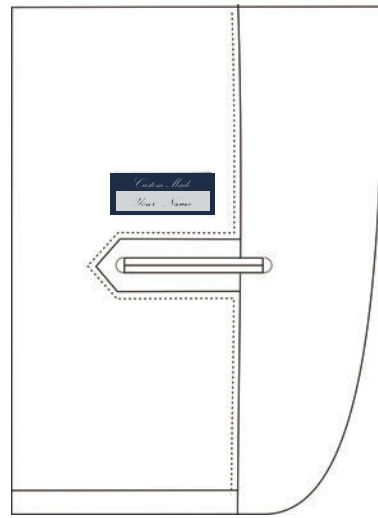


Above Left Pocket

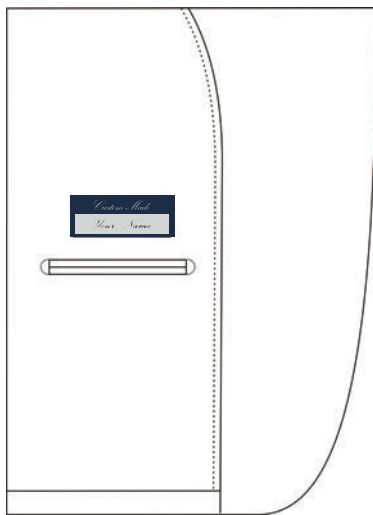
Interior Monogram Label



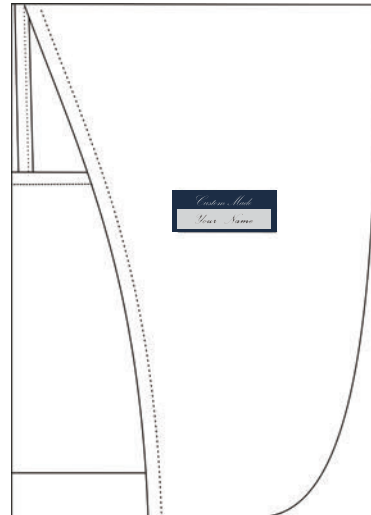
Jet



Cloth edged

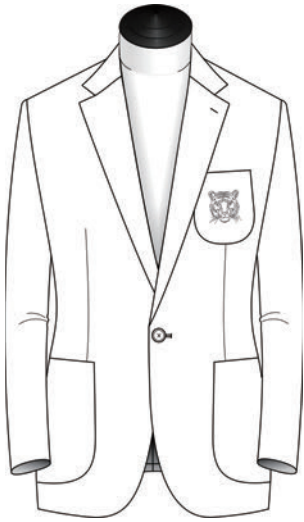


Curved French Facing



Unlined

Jacket Breast Pocket Emblem



Breast Pocket



MP01



MP02



MP03



MP04

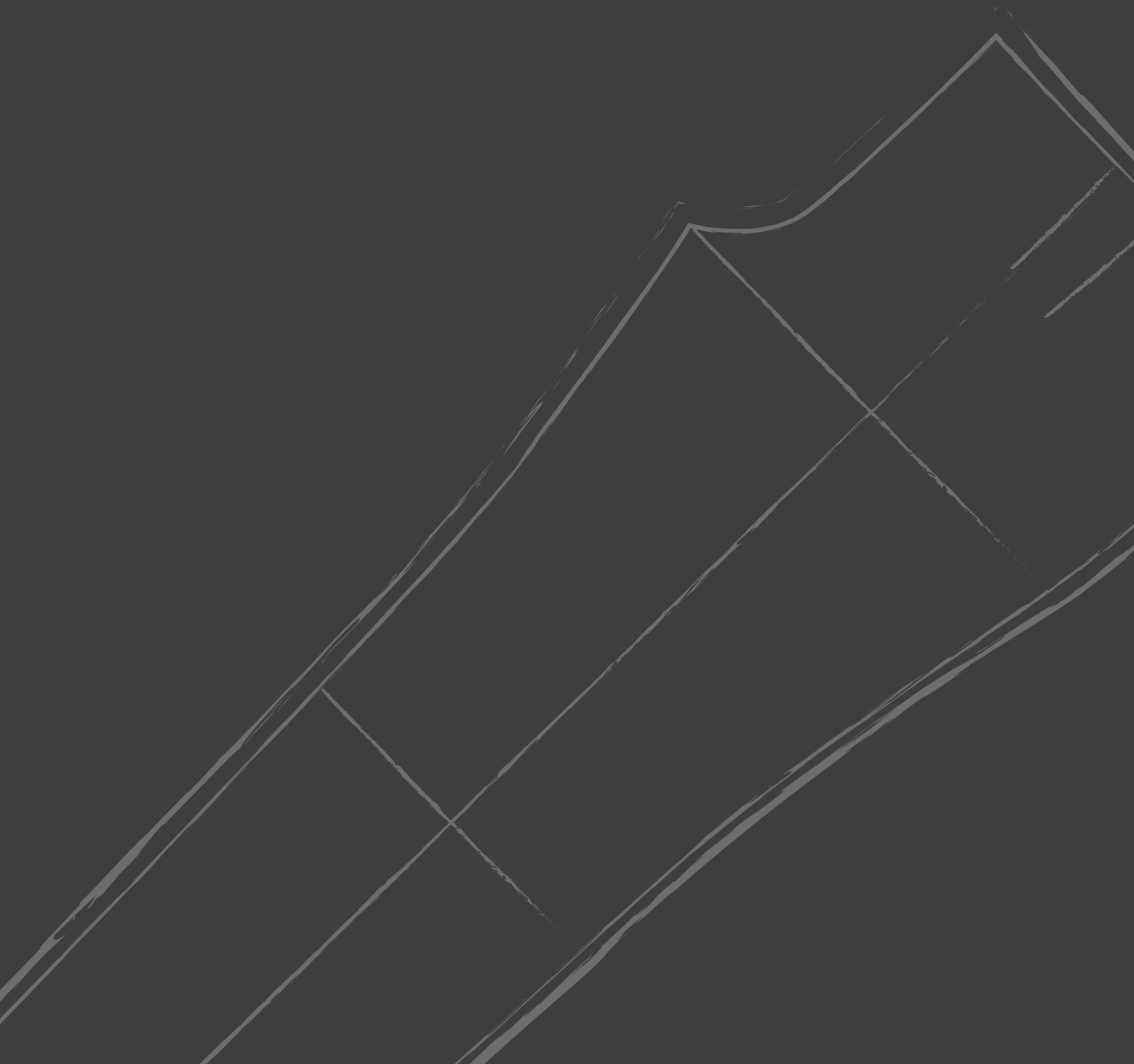
Jacket Breast Pocket Monogram



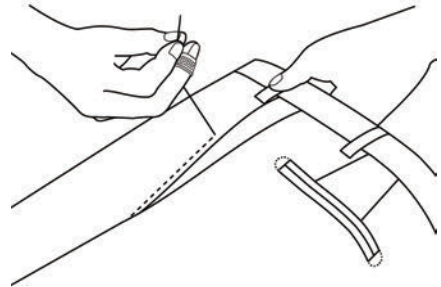
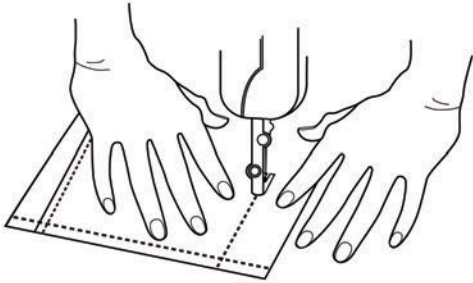
UPPERCASE 5cm

DesignOptions

Trousers



Make



Traditional

Dinner split

Coin pocket

AMF on the side pockets

Blind attached belt loops

Back pockets with 'D-bar tags'

Button attachment done by hand

Handmade

Same as traditional

Inside waistband with pleats

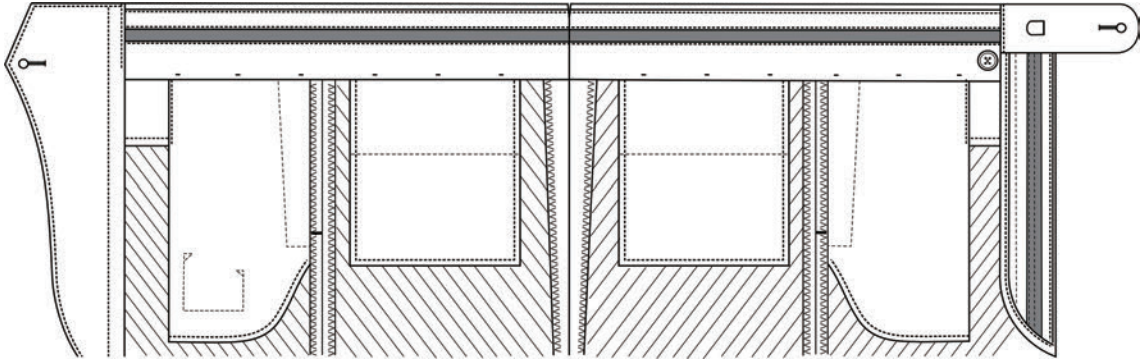
Button attachment done by hand

Buttonholes are made by hand

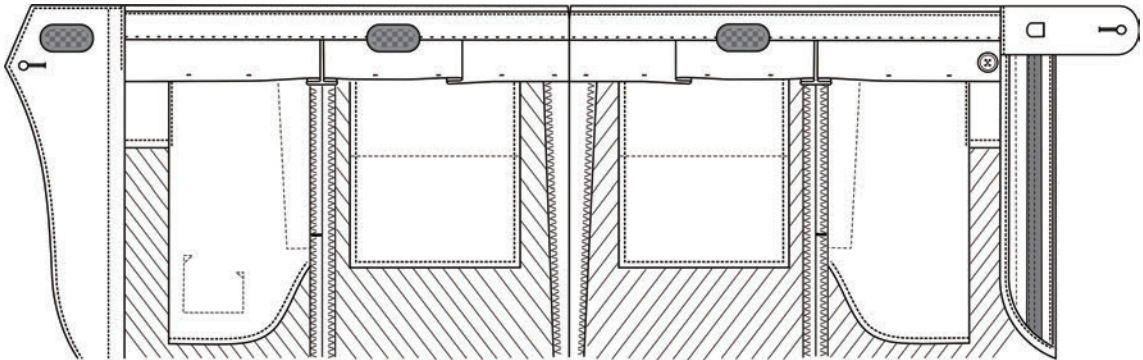
Pick Stitching is done by hand

Fly is finished with handmade
Pick Stitching

Make

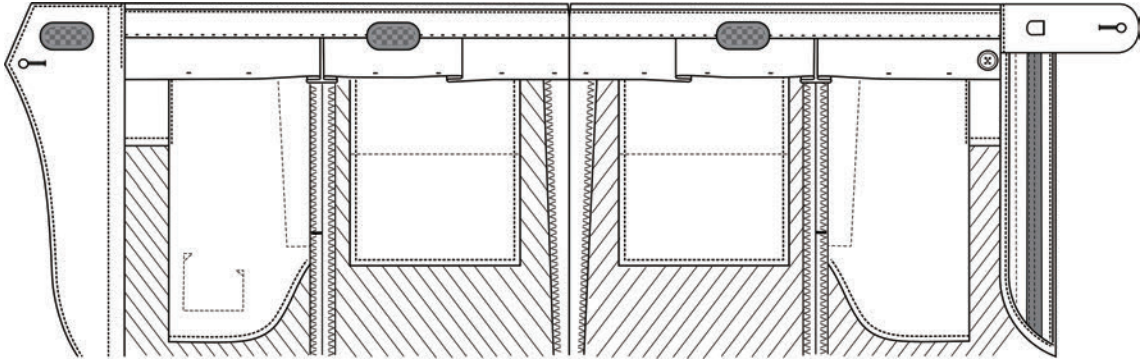


Traditional

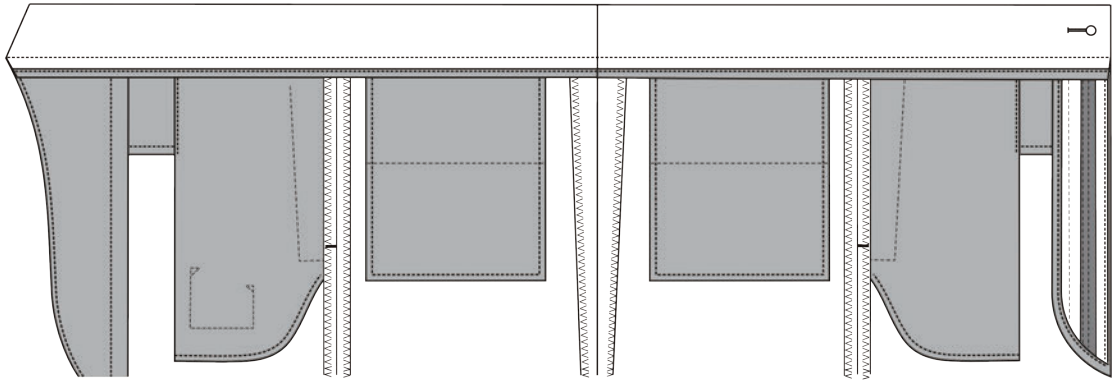


Traditional With Pleated Waistband

Make

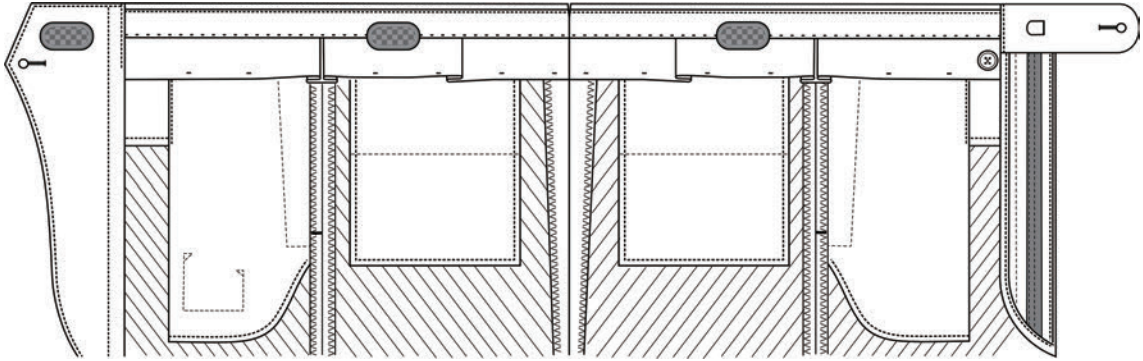


Handmade

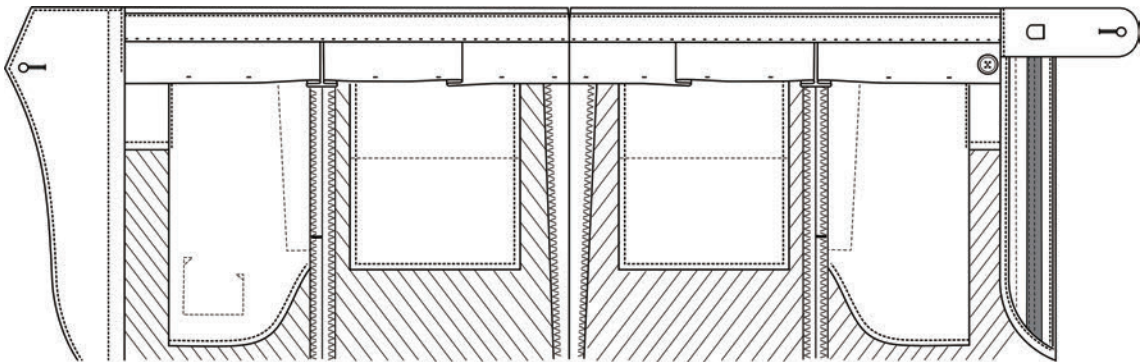


Self Fabric Waistband

Make

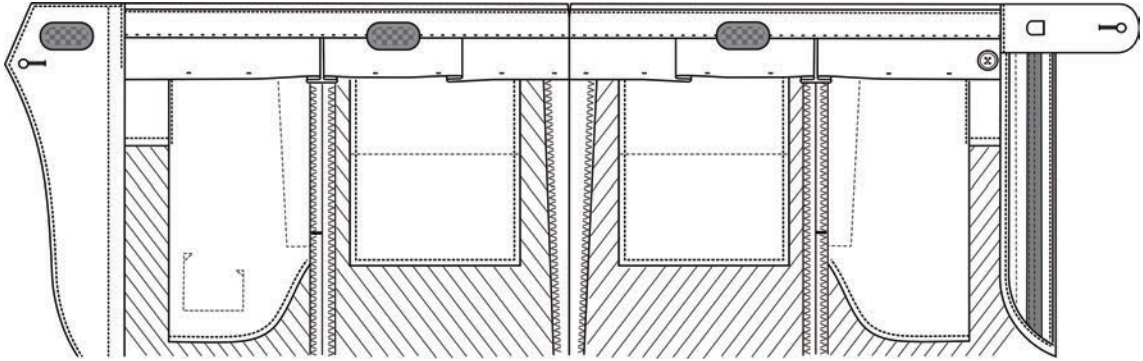


Traditional with Pleated Waistband with Grippers

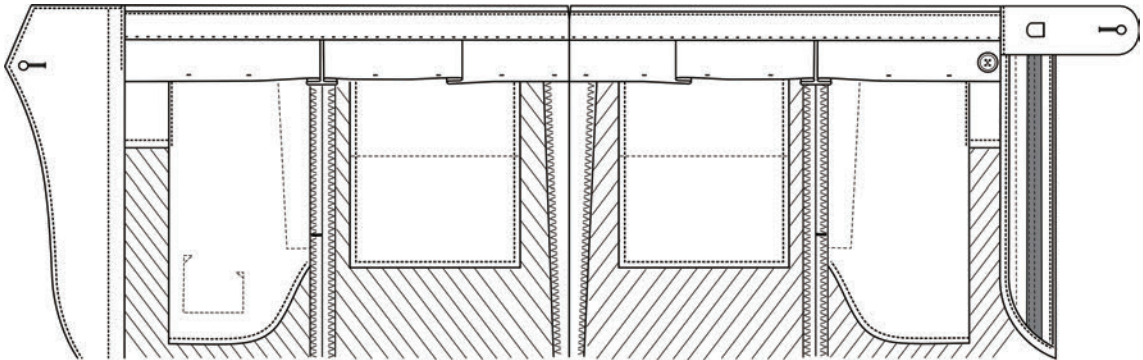


Traditional with Pleated Waistband without Grippers

Make



Handmade with Grippers



Handmade without Grippers

Pleat Qty



0 Flat Front

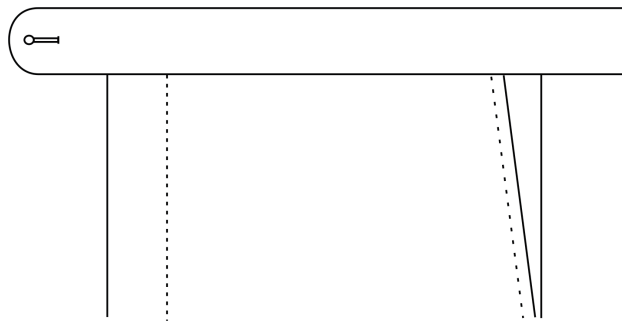


1 Pleat

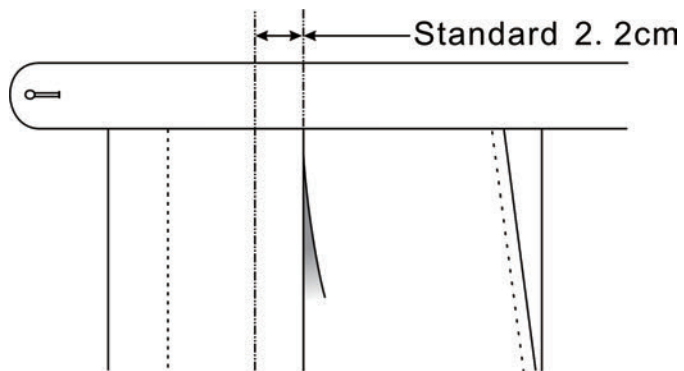


2 Pleats

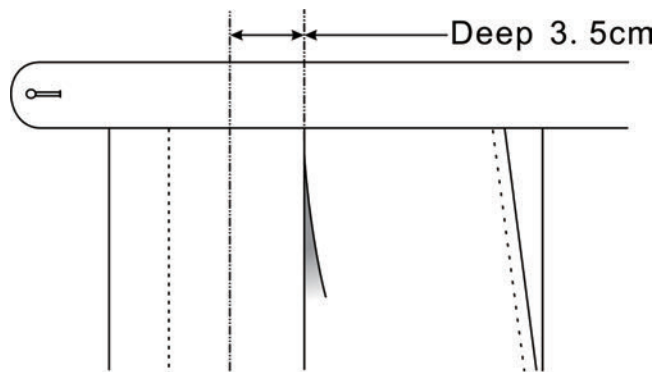
Pleat Depth



N/A

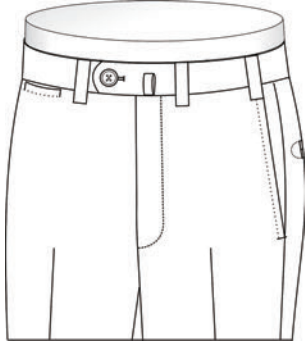


Standard 2.2cm | 7/8"

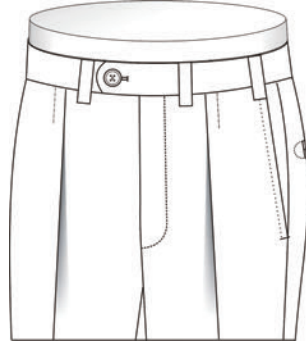


Deep 3.5cm | 1 3/8"

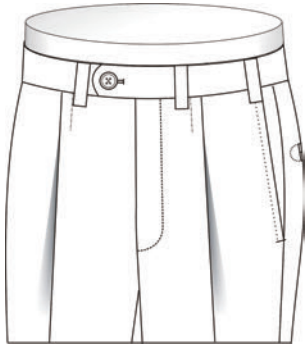
Pleat Direction



N/A

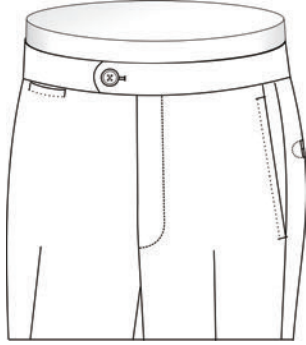


Forward (in)

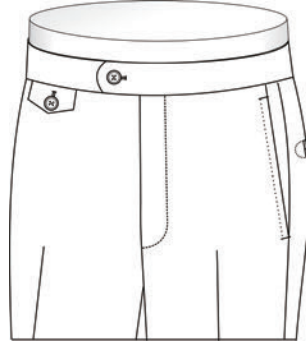


Reverse (out)

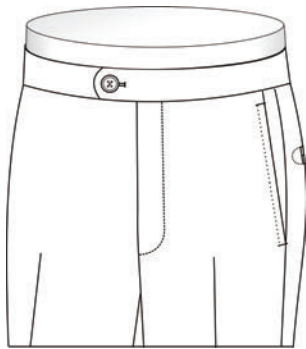
Watch Pocket



Watch Pocket without Flap

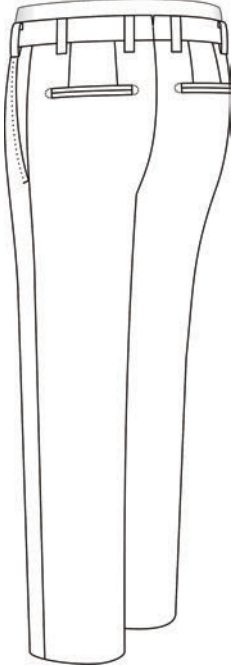


Watch Pocket with Flap

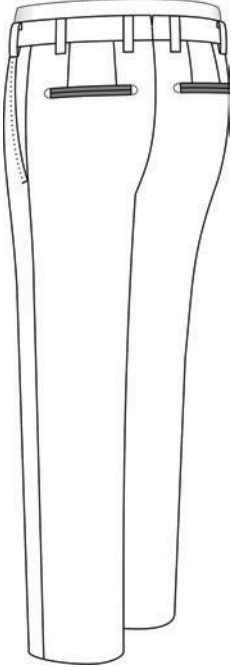


No

Back Pocket Jetting Formal Treatment

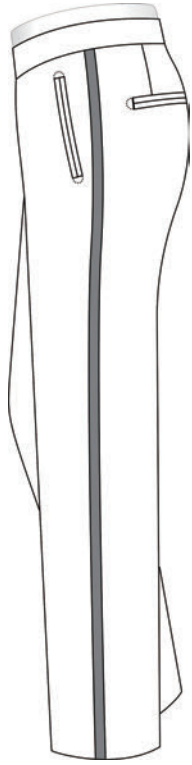


No

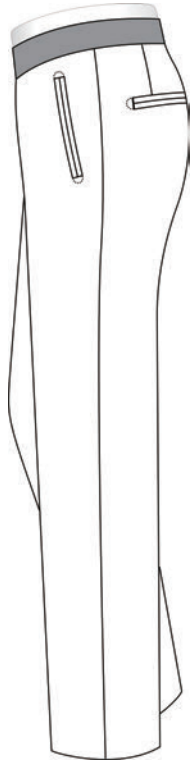


Yes

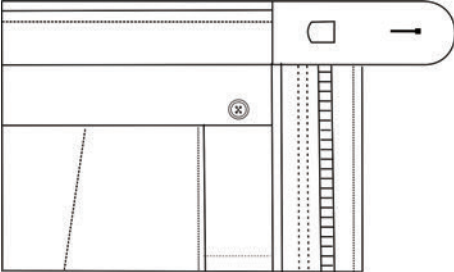
Formal Treatment



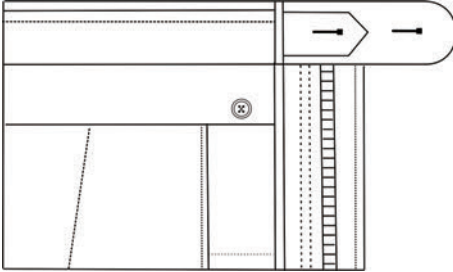
Waistband Formal Treatment



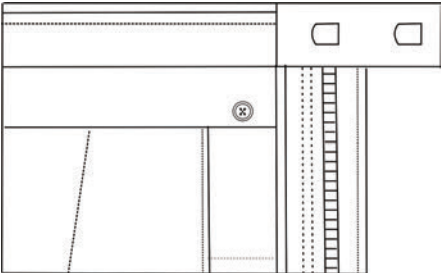
Waistband Closure



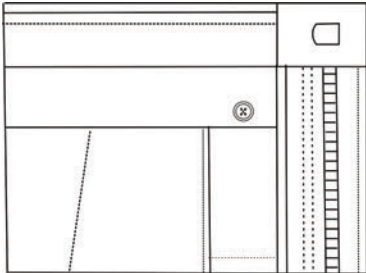
Ext. With 1 Btn & 1 Hook & Bar



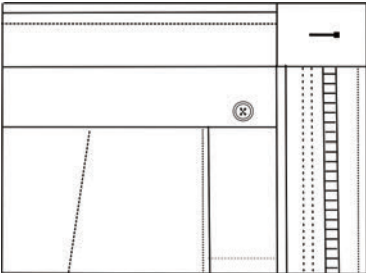
Ext. With 2 Btn



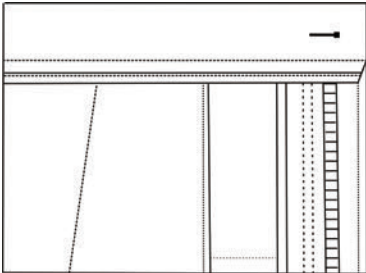
Ext. With 2 Hook & Bar



Non-Ext. With 1 Hook & Bar

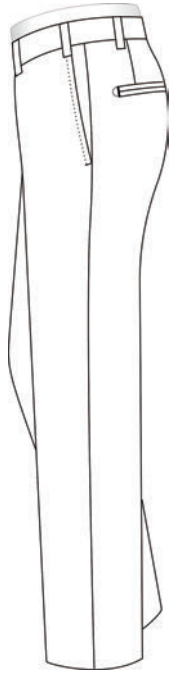


Non-Ext. With 1 Btn

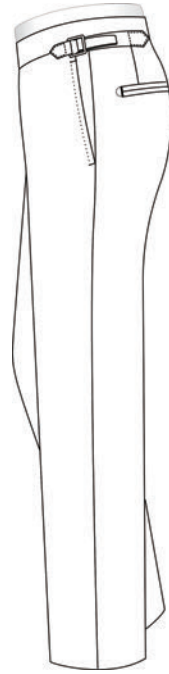


Self Fabric Waistband Closure

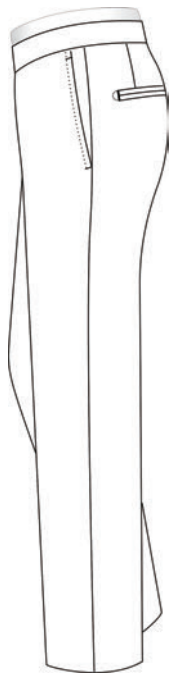
Waistband Style



Belt Loops



Buckle & Strap



No Loops Or Strap



Adjustable D-Ring Straps

Waistband Style



No Loops with elastic



Standard 1B Long Ext.



4.5cm Wide 2B Long Ext.
(Self Fabric)

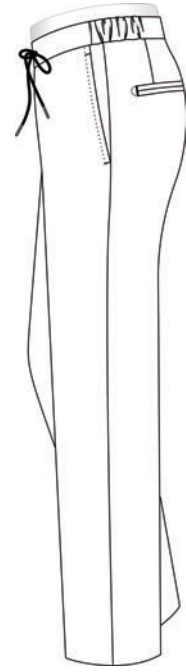


4.5cm Wide 2B Long Ext.
with Buckle & Strap

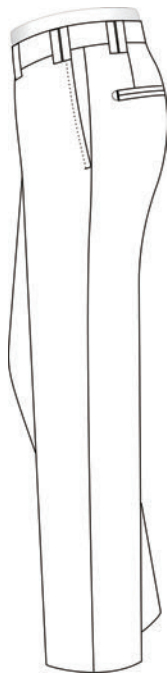
Waistband Style



3.5cm Wide 1B Long Ext.
with Buckle & Strap

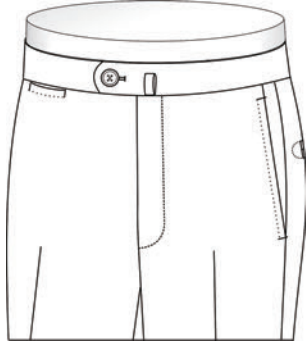


Draw String

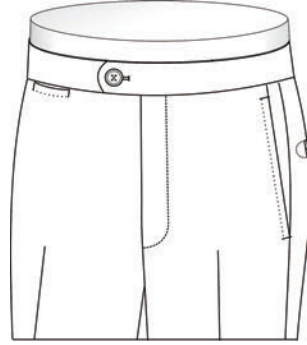


Double Belt Loops

Buckle Loop



Yes



No

Side Pockets



Slanted



Slanted Wide



On Seam



Jettted Off Seam

Side Pockets



Western

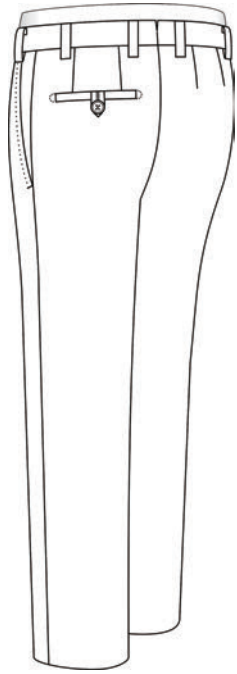


Jean Pocket

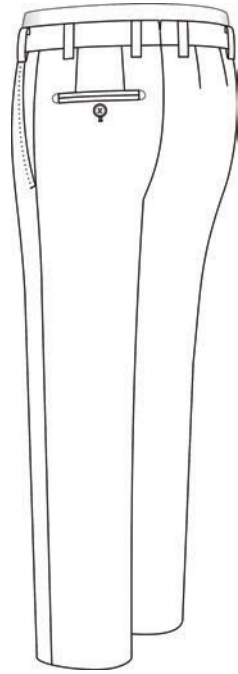


Welted Seam

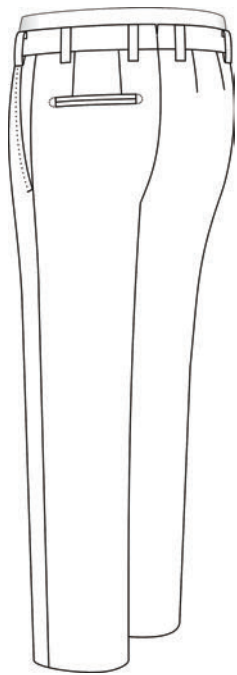
Left Back Pocket



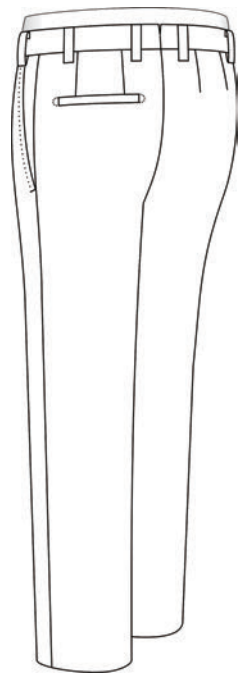
Loop & Button



Jetted With Button

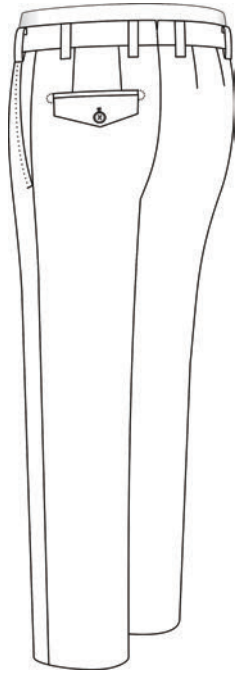


Jetted Without Button

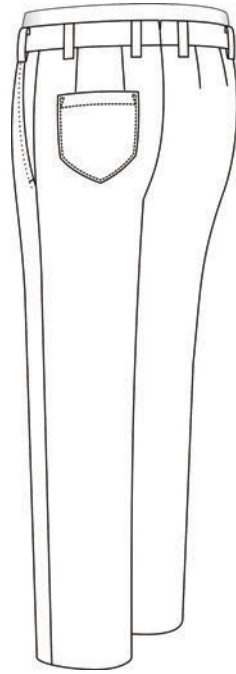


Welted Without Button

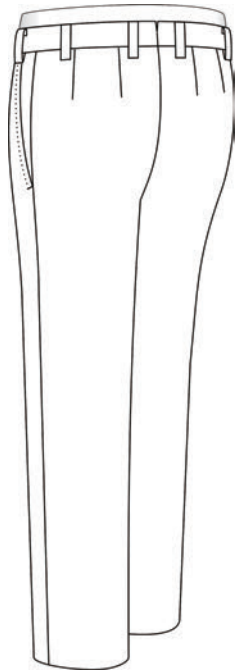
Left Back Pocket



Flap & Button

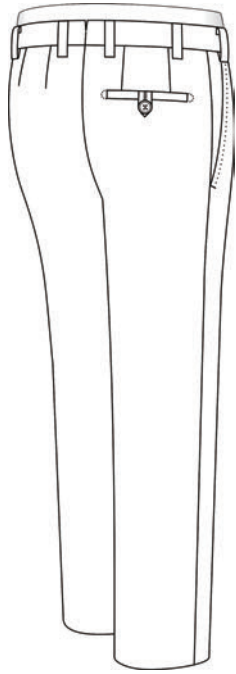


Patch



None

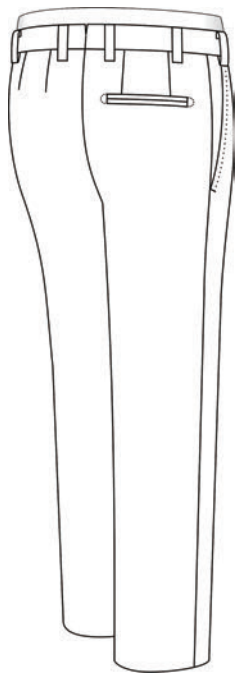
Right Back Pocket



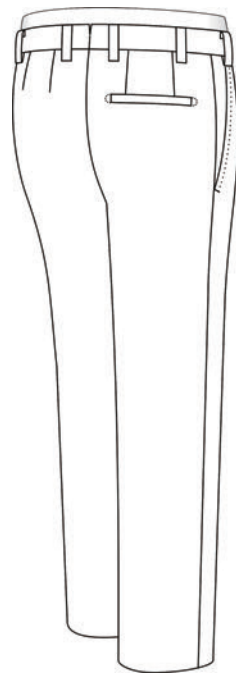
Loop & Button



Jetted With Button

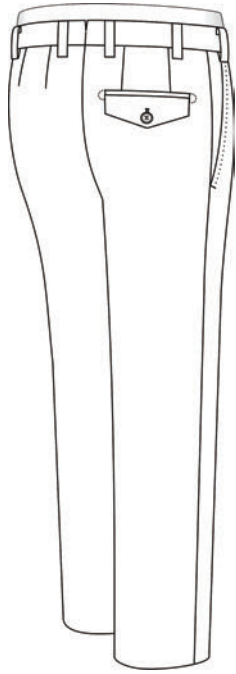


Jetted Without Button

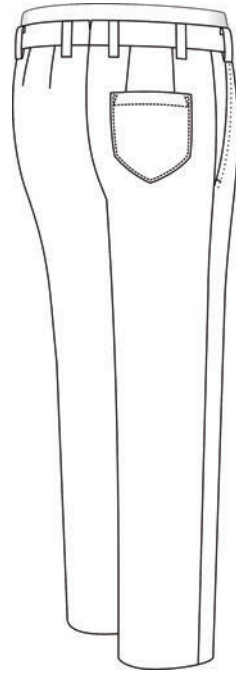


Welted Without Button

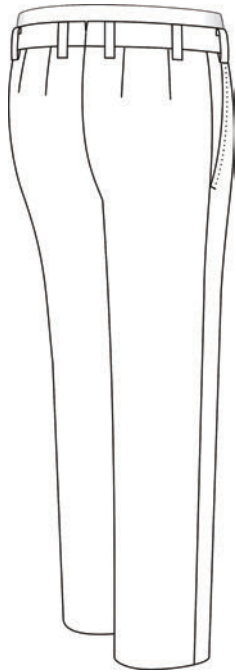
Right Back Pocket



Flap & Button

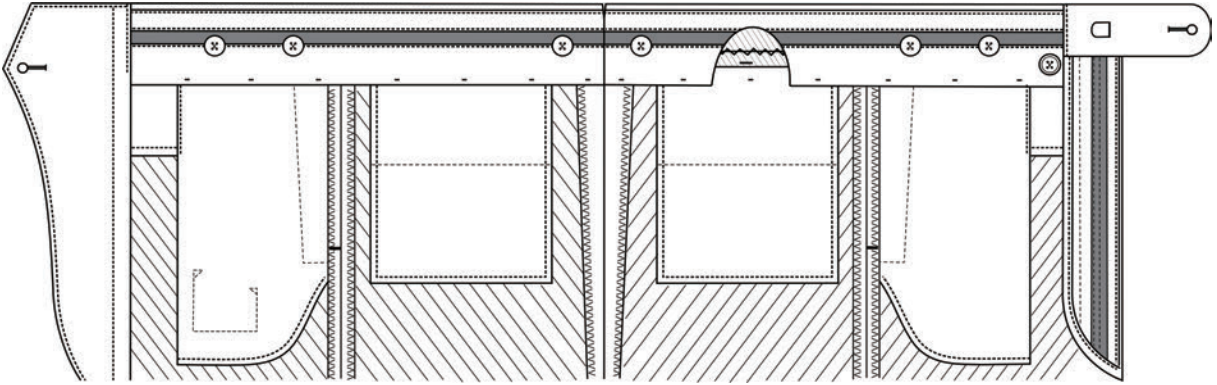


Patch

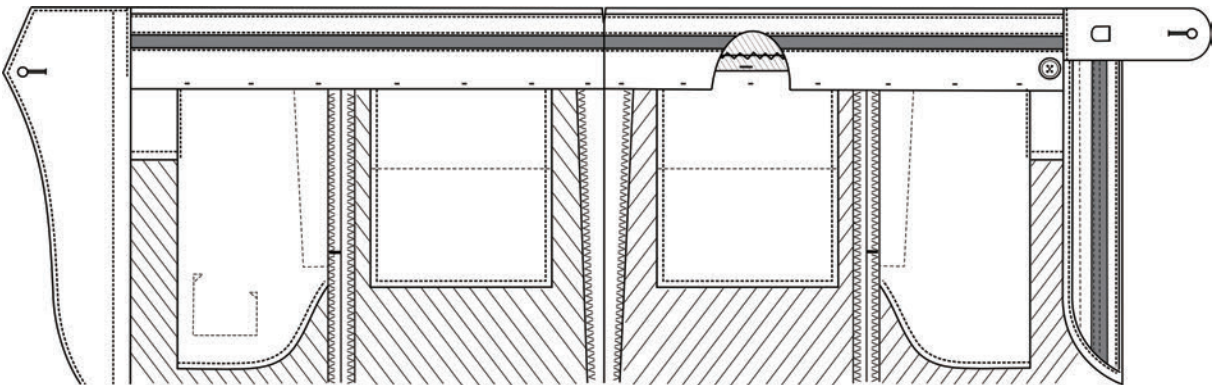


None

Suspender Buttons

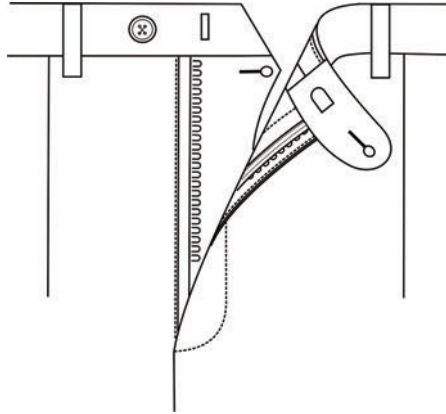


Yes

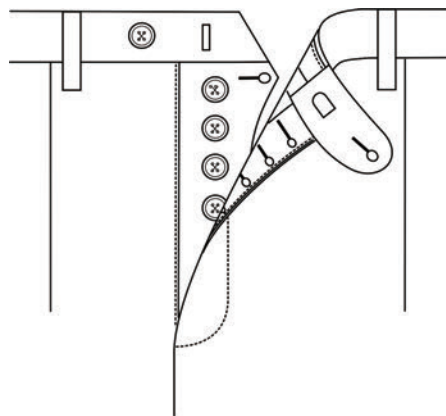


No

Fly Closing

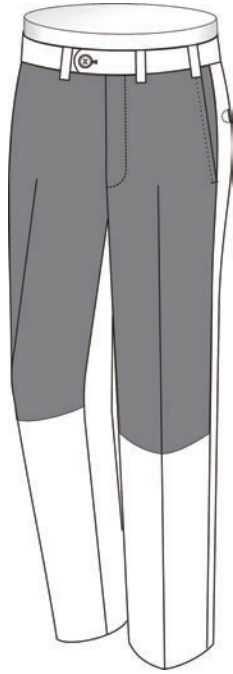


Zipper

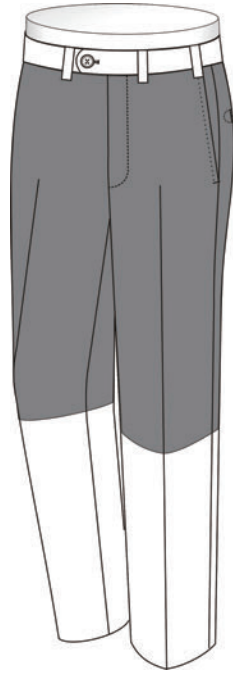


Buttons

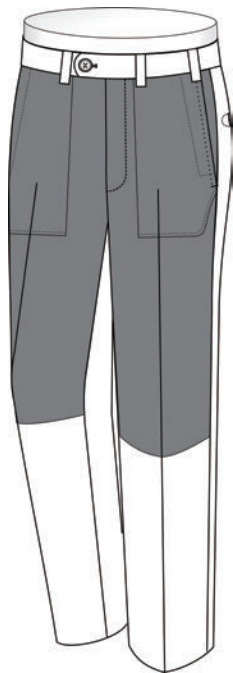
Lining Placement



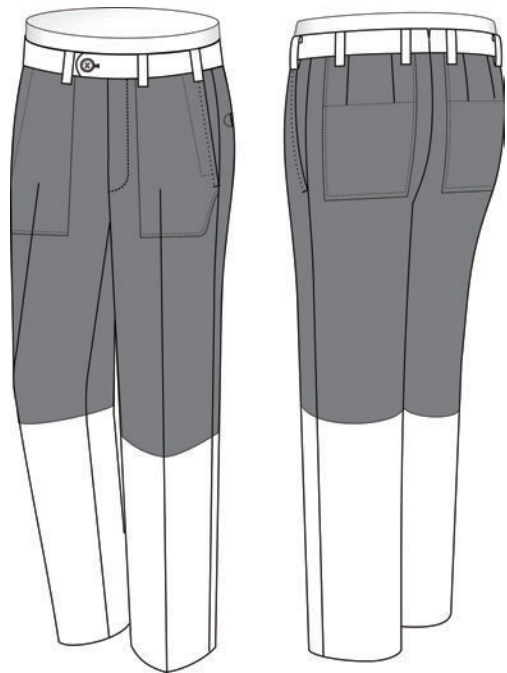
Half Front Lined



Half Front & Half Back

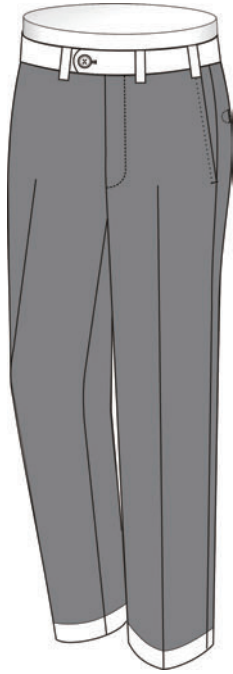


Half Lined Front



Half Lined Front & Back

Lining Placement



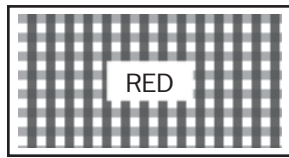
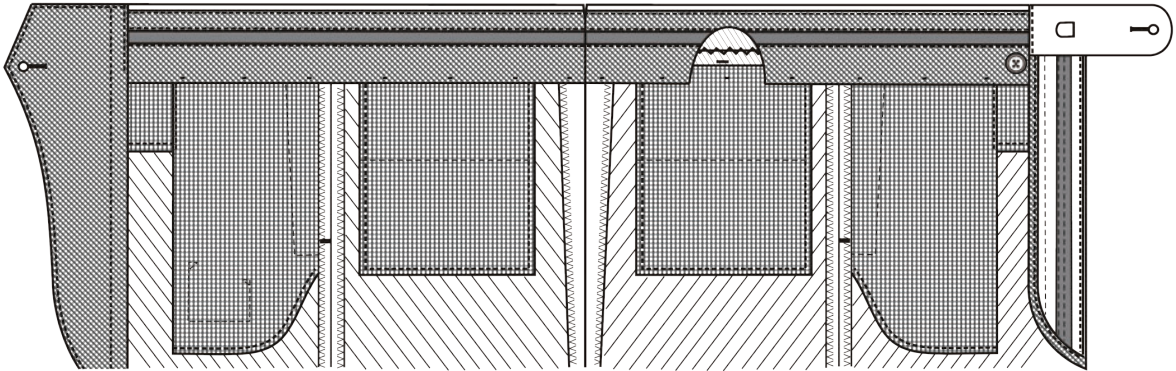
Fully Lined Front & Back



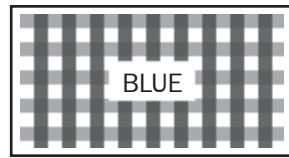
None

Int. Pkt & Pocket & Trim

(traditional make only)

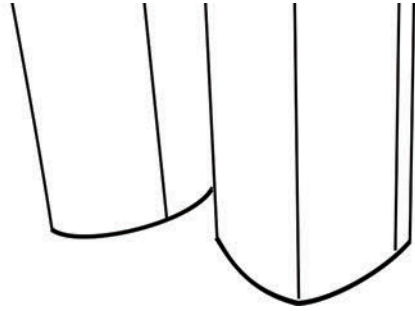
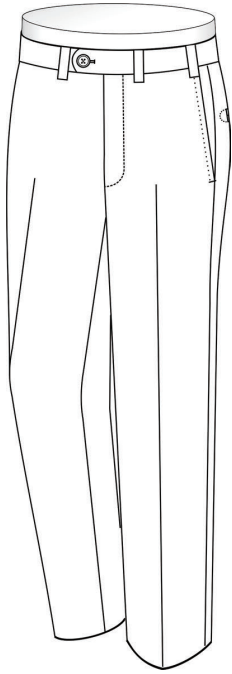


TRP03

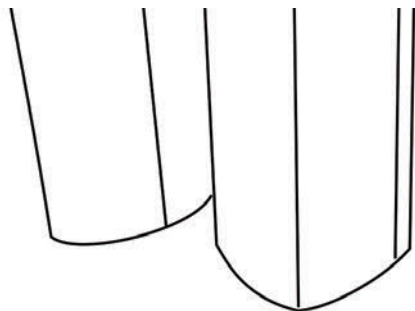


TRP04

Bottom Finishing



Plain Hem With Heel Tape

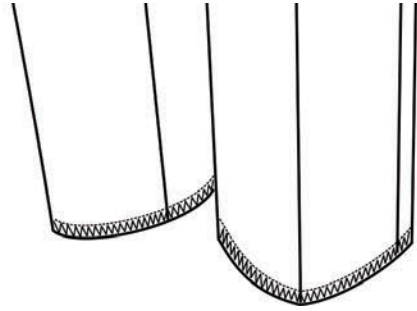


Plain Hem With No Heel Tape

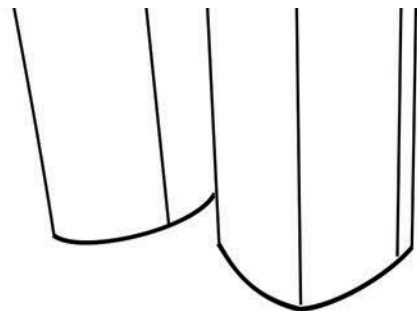
Bottom Finishing



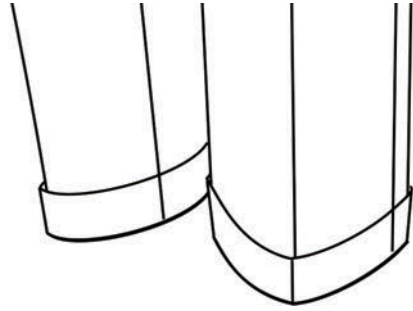
Unfinished



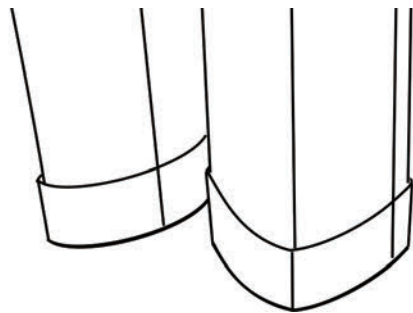
Plain Hem With Fabric Heel Tape



Bottom Finishing



Cuffs 3 cm | 1 1/8"

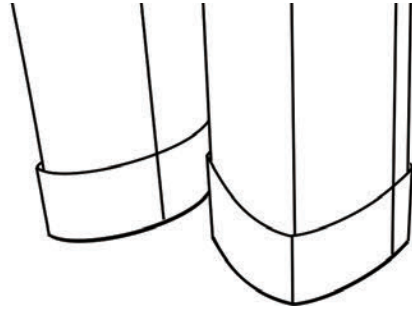


Cuffs 4 cm | 1 1/2"

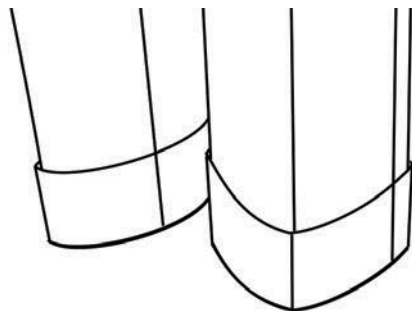
Bottom Finishing



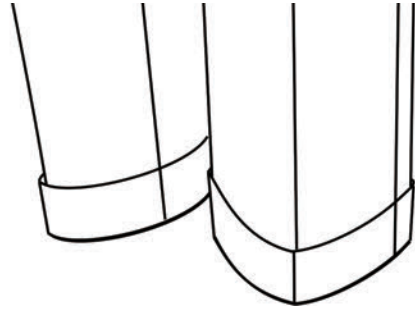
Cuffs 4.5 cm | 1 3/4"



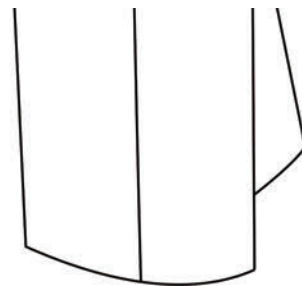
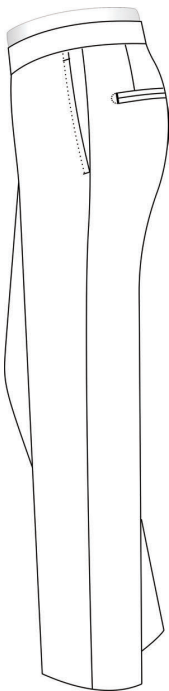
Cuffs 5 cm | 2"



Bottom Finishing

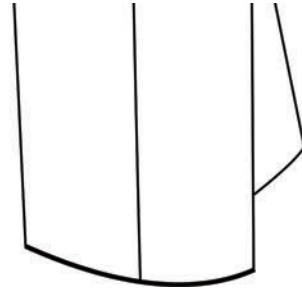
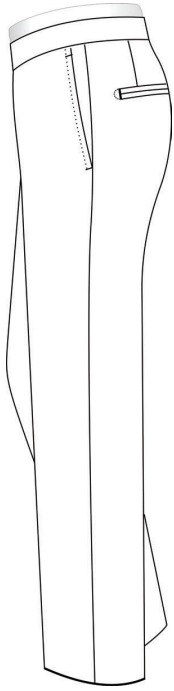


Cuffs 3.5 cm | 1 3/8"



Slanted Hem with no Heel Tape

Bottom Finishing

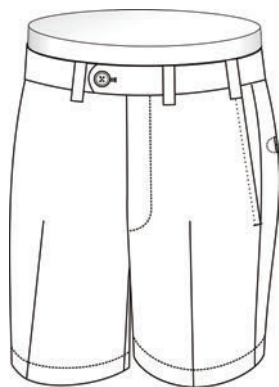
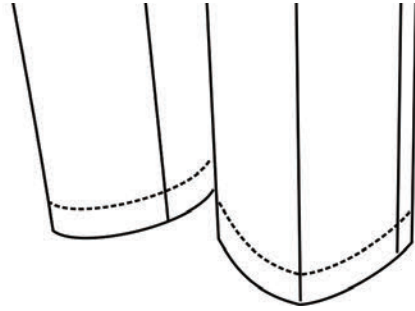


Slanted Hem with Heel Tape

Bottom Finishing

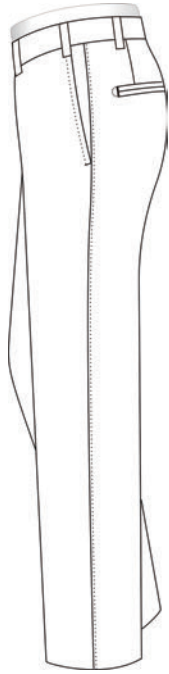


Casual With 2.5 cm | 1" Hem

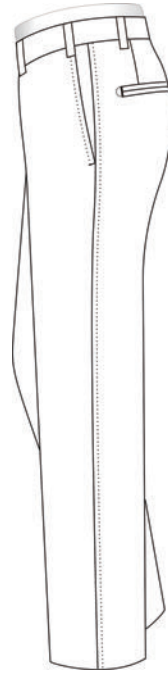


Casual With 2.5 cm | 1" Hem

Pick Stitching



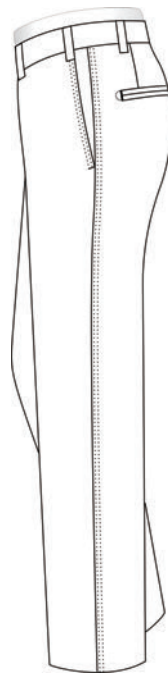
2mm



6mm

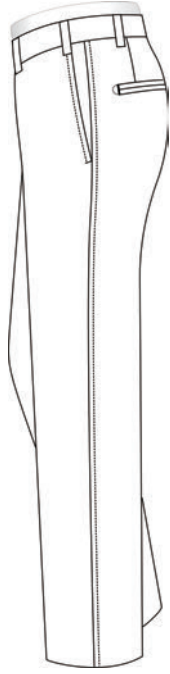


No



Double Stitching

Top Stitching



6mm



Double

Leg Pressing



With Front Crease



Without Front Crease

Waistband V-Split



Yes



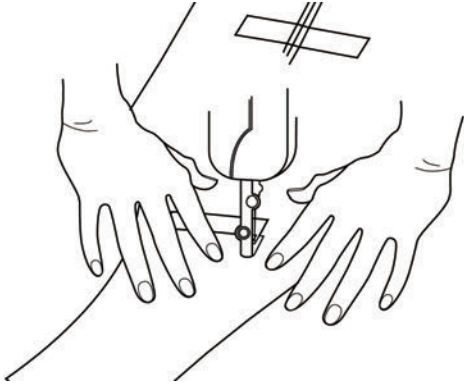
No

DesignOptions

Waistcoat

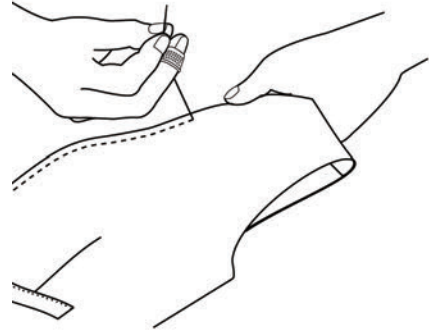


Make



Traditional

Button attachment done by hand



Handmade

Same as Traditional

Full canvas inside construction

Button attachment done by hand

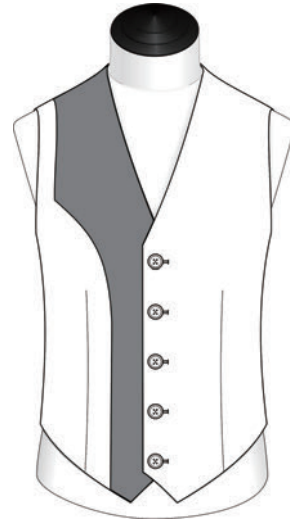
Buttonholes are made by hand

Pick Stitching is done by hand

Make



Traditional



Full Canvas



Handmade

Closure



4 Button



5 Button



6 Button



DB 8 Button

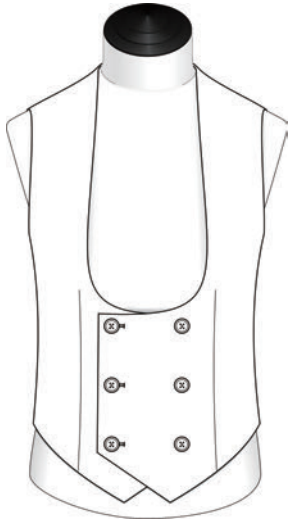


5+1 Button



DB 6 Button w straight bottom

Closure



DB 6 Button U Lapel w pointed bottom



DB 4 Button w pointed bottom

Lapel



Notch Lapel



Closure

4B.5B

Lapel Width

Notch Lapel 5cm | 2" (standard)

Notch Lapel 6cm | 2 3/8"

Notch Lapel 7cm | 2 3/4"

Notch Lapel 8cm | 3 1/8"



Peak Lapel



Closure

5B

Lapel Width

Peak Lapel 6cm | 2 3/8"

Peak Lapel 7cm | 2 3/4"

Peak Lapel 8cm | 3 1/8"



None

Closure

4B.5B.6B.

5+1B.DB8

Lapel



Lapel Width

- Notch Lapel 6 cm | 2 3/8"
- Notch Lapel 7 cm | 2 3/4"
- Notch Lapel 8 cm | 3 1/8"

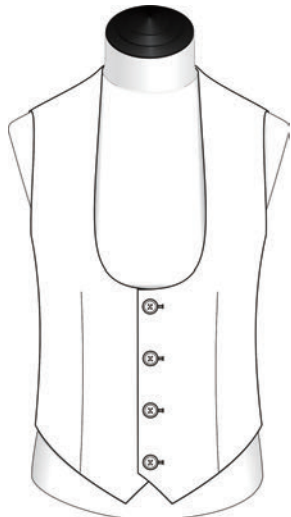
DB 8 Button Notch Lapel



Lapel Width

- Peak Lapel 6 cm | 2 3/8"
- Peak Lapel 7 cm | 2 3/4"
- Peak Lapel 8 cm | 3 1/8"

DB 8 Button Peak Lapel



Closure

4B.5B

U Lapel

Lapel



U Lapel

Closure

DB 8



Shawl Lapel



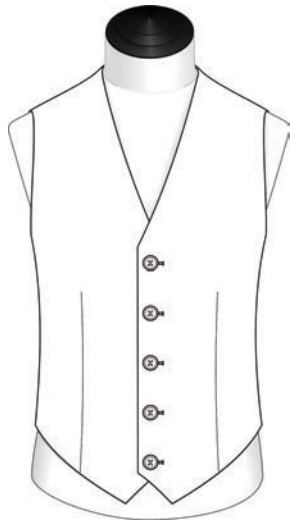
Closure

DB 8

Lapel Width

Shawl Lapel 5 cm | 2"

Chest Pockets



None



Welted

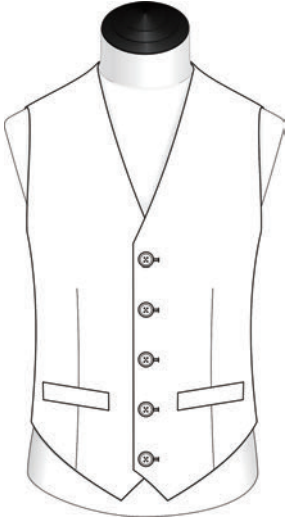


Welted Left



Welted Right

Side Pockets



Welted



Jetted



None

Formal Treatment Locations



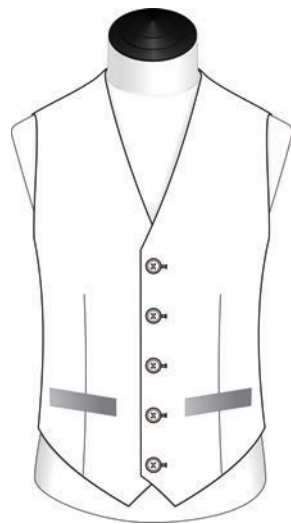
Formal Treatment Lapel



Formal Treatment Collar



Formal Treatment Chest Pockets Welted

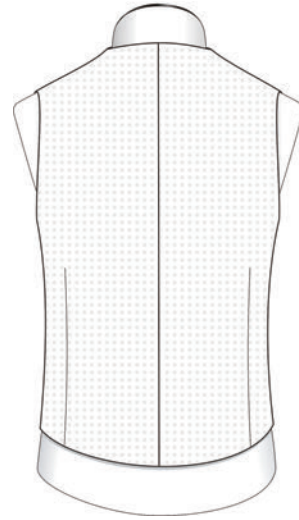


Formal Treatment Side Pockets

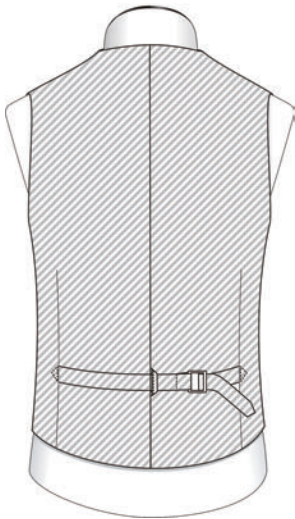
Back Exterior



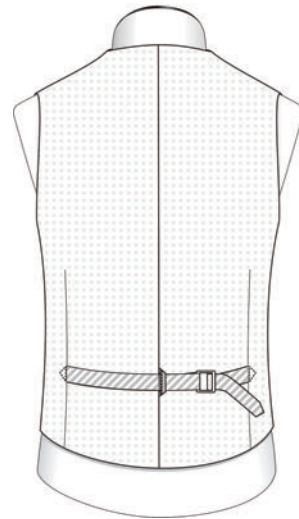
Fabric Back With No Strap



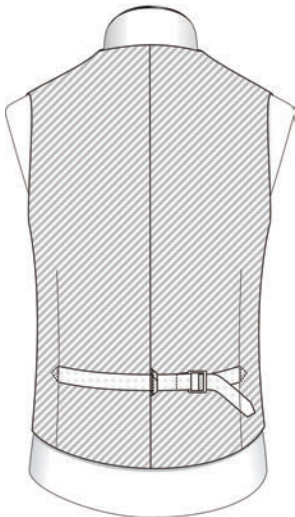
Lining Back With No Strap



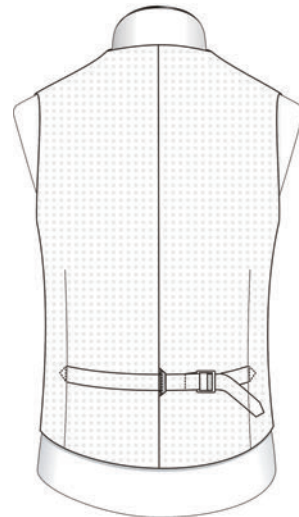
Fabric Back With Fabric Strap



Lining Back With Fabric Strap

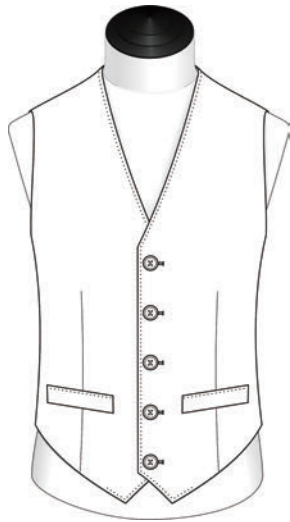


Fabric Back With Lining Strap



Lining Back With Lining Strap

Pick Stitching



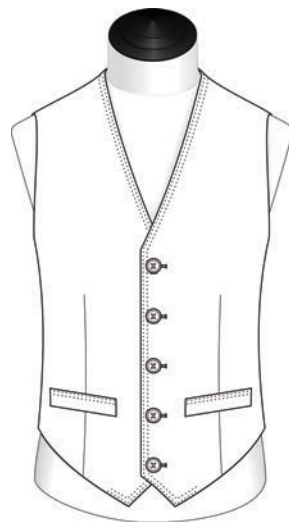
2mm



6mm



No

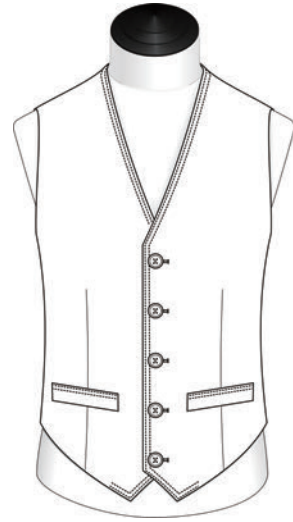


Double Stitching

Top Stitching



6mm



Double