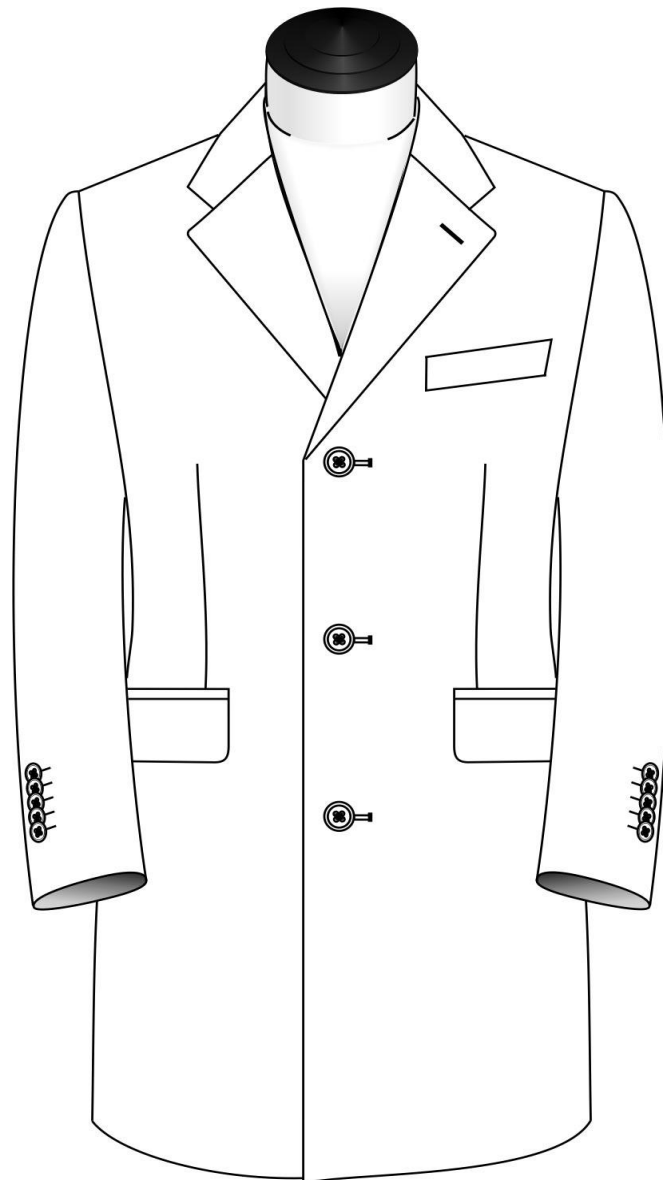


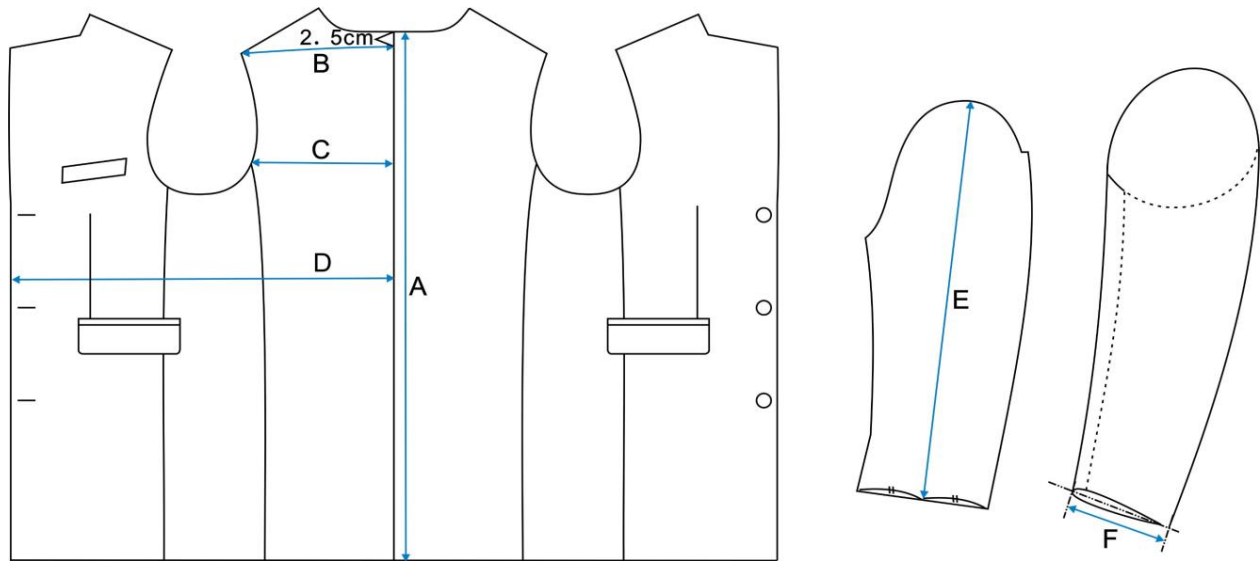
Fit Tool Garment Specs

Overcoats | Inches



OVERCOAT | REGULAR FIT | REGULAR LENGTH

Size Euro / Inch	A Back Length	B 1/2 Shoulder	C 1/2 Blades	D 1/2 Girth	E Sleeve Outside*	F 1/2 Hand
42 / 34R	35 7/8	8 3/8	8	18 1/8	24 5/8	5 1/4
44 / 35R	36 1/4	8 5/8	8 1/4	18 7/8	25	5 3/8
46 / 37R	36 5/8	8 3/4	8 3/8	19 5/8	25 3/8	5 1/2
48 / 38R	37	9	8 5/8	20 1/2	25 5/8	5 5/8
50 / 40R	37 3/8	9 1/8	8 7/8	21 1/4	26	5 3/4
52 / 42R	37 3/4	9 3/8	9 1/8	22	26 3/8	5 7/8
54 / 43R	38 1/4	9 5/8	9 3/8	22 7/8	26 5/8	6
56 / 44R	38 5/8	9 3/4	9 5/8	23 5/8	27	6 1/8
58 / 46R	39	10	9 7/8	24 3/8	27 3/8	6 1/8
60 / 48R	39 3/8	10 1/4	10 1/8	25 1/4	27 5/8	6 1/4
62 / 50R	39 5/8	10 3/8	10 3/8	26	27 3/4	6 3/8
64 / 51R	39 3/4	10 5/8	10 1/2	26 3/4	27 7/8	6 1/2
66 / 52R	40	10 7/8	10 3/4	27 1/2	28 1/8	6 5/8
68 / 54R	40 1/8	11 1/8	11	28 3/8	28 1/4	6 3/4
70 / 55R	40 3/8	11 1/4	11 1/4	29 1/8	28 3/8	6 7/8

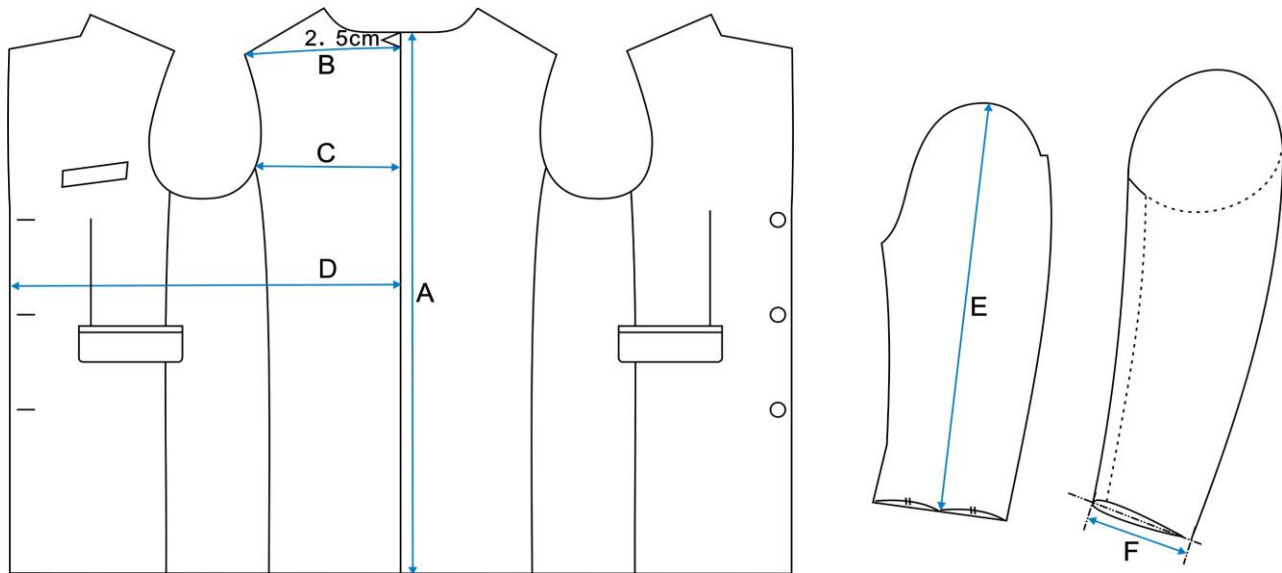


*** Sleeve Length Outside
Adjustment Considerations**
Unconstructed shoulder -3mm

*** Top Button Position
Adjustment Considerations**
Coat Length Adj. = 50% Effect

OVERCOAT | REGULAR FIT | LONG LENGTH

	A	B	C	D	E	F
Size Euro / Inch	Back Length	1/2 Shoulder	1/2 Blades	1/2 Girth	Sleeve Outside*	1/2 Hand
90 / 37L	37 3/4	8 3/4	8 3/8	19 5/8	26 1/4	5 1/2
94 / 38L	38 1/4	9	8 5/8	20 1/2	26 5/8	5 5/8
98 / 40L	38 5/8	9 1/8	8 7/8	21 1/4	27	5 3/4
102 / 42L	39	9 3/8	9 1/8	22	27 1/4	5 7/8
106 / 43L	39 3/8	9 5/8	9 3/8	22 7/8	27 5/8	6
110 / 44L	39 3/4	9 3/4	9 5/8	23 5/8	28	6 1/8
114 / 46L	40 1/8	10	9 7/8	24 3/8	28 1/4	6 1/8



*** Sleeve Length Outside
Adjustment Considerations**
Unconstructed shoulder -3mm

*** Top Button Position
Adjustment Considerations**
Coat Length Adj. = 50% Effect